



OAKCASTLE

# HIFI150

---

USER MANUAL

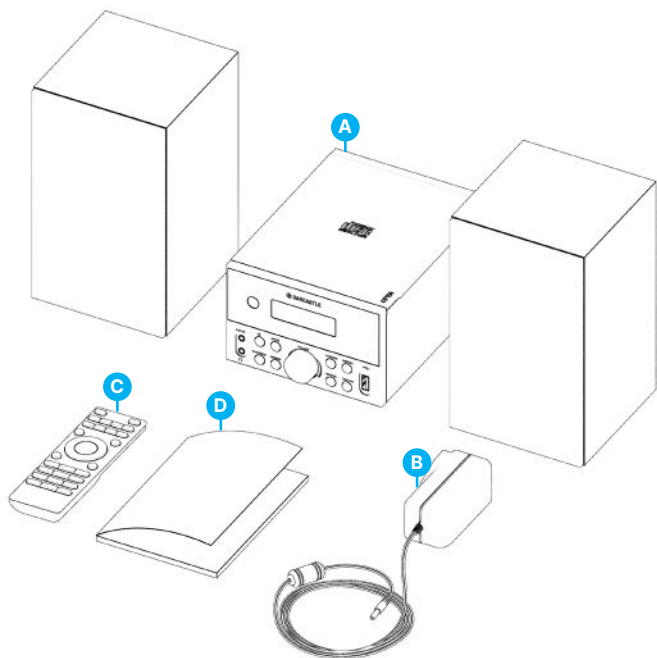
What's In the Box?.....	3
Controls And Functions.....	4
Instructions Guide.....	7
Basic Operation.....	7
FM Radio.....	8
CD Playback Mode.....	10
Bluetooth Mode .....	12
USB Playback Mode.....	13
AUX In Mode & Headphones.....	14
Troubleshooting.....	15
Product Specifications.....	16
Warranty.....	16
Safety Information.....	17

**3 year**  
Warranty

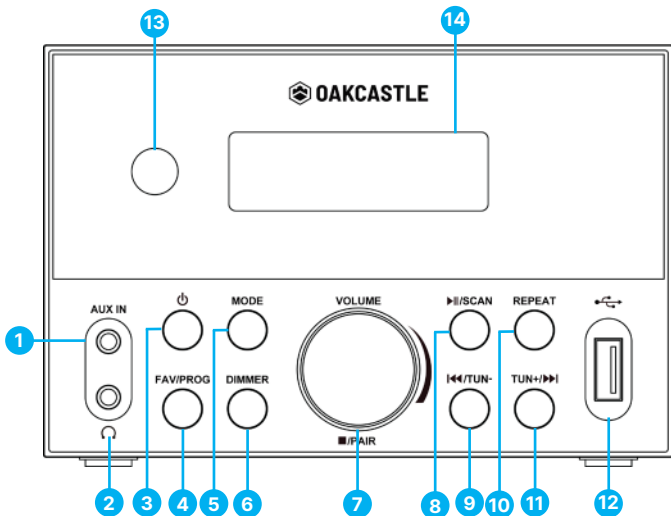
Register your product online for a FREE 3 year extended warranty at: [www.oakcastle.co.uk](http://www.oakcastle.co.uk)

## What's in the Box?

- A. The Oakcastle HIFI150
- B. Power Adaptor
- C. Remote Control
- D. User Manual

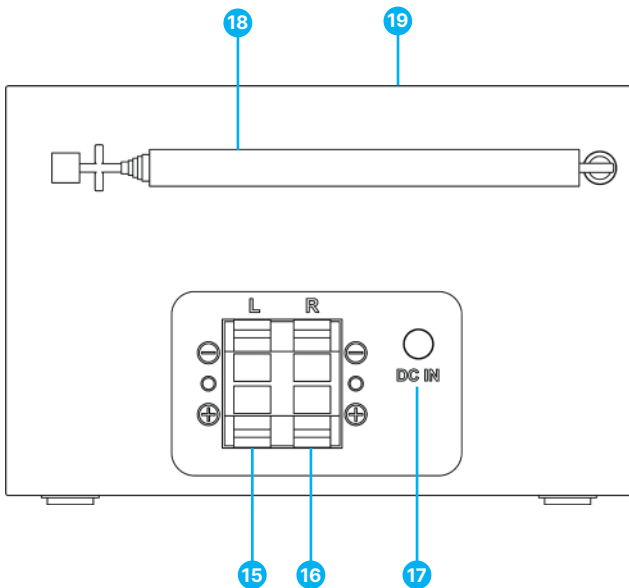


## The Front View



- |    |                     |     |                       |
|----|---------------------|-----|-----------------------|
| 1. | AUX Input           | 8.  | Scan/Play/Pause       |
| 2. | Headphone Jack      | 9.  | Previous/Tune-        |
| 3. | Power/Standby       | 10. | Repeat                |
| 4. | FAV/Prog            | 11. | Next/Tune+            |
| 5. | Mode                | 12. | USB Playback Port     |
| 6. | Dimmer              | 13. | Remote Control Sensor |
| 7. | Vol-/Vol+/Stop/Pair | 14. | LCD Display           |

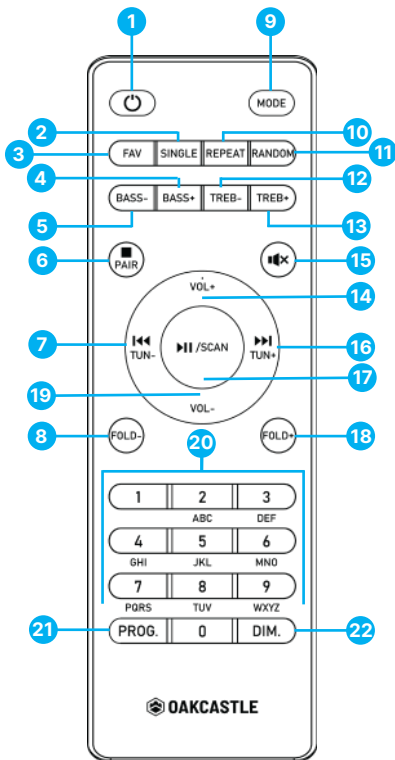
## Back View



15. Left Speaker connecting port
16. Right Speaker connecting port
17. DC IN- power cable port
18. Radio Telescopic Antenna
19. CD compartment

## Remote Control

1. Standby / ON
2. Single
3. FAV
4. Bass+
5. Bass-
6. Stop/Pair
7. Previous/TUN-
8. Fold-
9. Mode
10. Repeat
11. Random
12. Treble-
13. Treble+
14. Vol+
15. Mute
16. Next/TUN+
17. Scan/Play/Pause
18. Fold+
19. Vol-
20. Numeric Keypad
21. Programme
22. Dimmer



*\*Please note that the instructions within this manual will refer to the remote button number e.g. (Rem\*number\*) or the buttons on the unit e.g. (Ref\* number\*) in accordance with the diagrams on pages 4-6.*

## Important Information

Before connecting the Oakcastle HIFI 150 to the mains, ensure that the VOLTAGE mentioned on the power supply is same as the voltage of your local area.

Use the supplied mains adaptor to connect the device to a household mains socket.

## Basic Operations / Product Set-up

Remove all packaging and prepare the Oakcastle HIFI150 for use.

Connect the left and right speakers to the main unit (**Ref.15 and 16**). Extend the radio telescopic antenna (**Ref.18**) in full. Insert the power cable into the DC IN jack port (**Ref.17**) on the unit, and the other end of the plug into mains socket, and then power on the Oakcastle HIFI150.

Press the 'MODE' button on the unit (**Ref.5**) or remote control (**Rem.9**) to switch the unit's mode: FM, BT, CD, USB Playback or AUX IN Mode.

Press the 'Power/Standby' button (**Ref.3**) on the unit or on the remote control (**Rem.1**) to set the unit's mode as 'ON' or place in 'Standby' Mode.

Press the 'Dimmer' (**Ref.6**) button on the unit, or on the remote control (**Rem.22**) repeatedly to change the LCD display backlight to 'High-Low-Turn off' level.

Press the 'BASS-/+' or 'TREB-/+' on remote control as per your preferences.

## FM Radio

Position the Oakcastle HIFI150 where you have good FM Radio signal. Ensure the radio telescopic antenna is extended in full before starting to scan for available radio stations at your location.

Press the 'Mode' button **(Ref.5)** on the unit or on the remote control **(Rem.9)** repeatedly to change the mode into 'FM'. The LCD display will then read 'FM' on the screen.

## FM Radio- Automatic Scan

Once in FM Mode, press the 'Play/Pause/Scan' button **(Ref.8)** on the unit or on the remote control **(Rem.17)** to start processing an automatic full scan.

The radio will scan the entire FM frequency band and will find and store the FM radio stations with strong radio signal available at your location. Once the scan has been completed, the radio will start playing the first radio station found. Use the 'PREVIOUS' and the 'NEXT' buttons on the unit or remote control to navigate through the stations found.

After processing the automatic scan to view/recall the entire list of radio stations stored on the unit, press the 'FAV/PROG' button on the unit **(Ref.4)** or the 'FAV' button on the remote control **(Rem.3)**.

## FM Radio- Manual Scan

While in FM Mode, to manually scan for radio stations, press the 'PREVIOUS' & 'NEXT' buttons on the unit or remote control to search up or down the FM frequency band with 0.1MHz for each button press.



## FM Radio Stations- Presets

The Oakcastle HIFI150 has up to 30 presets on which you can save your favourite FM radio stations for quick access.

### Storing Presets

While playing a radio station, press and hold the 'FAV/PROG' button (**Ref.4**) for 2-3 seconds on the unit or the 'FAV' button on the remote control (**Rem.3**) to open the Presets Store list. Use the 'PREVIOUS' & 'NEXT' buttons to search for empty space, select one, and then press the 'FAV/PROG' button on the unit or the 'FAV' button on the remote control to confirm and store your radio station.

*Please Note: To remove/replace an existing preset radio station, simply save another radio station on that preset space.*

### Recalling Presets

Press the 'FAV/PROG' button on the unit (**Ref.4**) or the 'FAV' button on the remote control (**Rem.3**) to enter the Recall Presets list. Use the 'PREVIOUS' or 'NEXT' buttons on the remote control to navigate through the list and select the preset station. The HIFI150 will then automatically start playing the radio station selected.

*Please Note: When recalling a preset, do not press and hold the 'FAV/PROG' on the unit or the 'FAV' button on the remote control as you will then enter the 'Store Presets list', instead of the Recall presets list.*

## CD Player Mode Basic Operation.

Press the 'Mode' button on the unit (**Ref.5**) or on the remote control (**Rem.9**) repeatedly to enter CD Mode. The Oakcastle HIF150 will show the text 'CD' on its display.

Lift the CD compartment cover at the top of the unit to insert or remove a CD. When inserting a CD, the unit will read and start playing in a few seconds, indicating the track number on the LCD screen.

The CD supported formats are CD/MP3/WMA/CDDA.

## CD Player Controls & Functions:

- Press the 'PREVIOUS' & 'NEXT' buttons on the unit (**Ref.9 & Ref.11**) or on the remote control (**Rem.7 & Rem.16**) to skip and play the next/previous CD audio track currently playing.
- Press the 'PLAY/PAUSE' button on the unit or on the remote control (**Rem.17**) to play or pause a song currently playing.
- Press the 'STOP' button on the unit (**Ref.7**) or on the remote control (**Rem.6**) to stop playing. Press the 'PLAY/PAUSE/Scan' to resume playing (**Rem.17**).
- Press the 'REPEAT' button on the remote control (**Rem.10**) to repeat the entire CD currently playing. Press again to switch off the repeat function.
- Press the 'SINGLE' button on the remote control (**Rem.2**) to repeat the currently playing song once.
- Press a numeric keypad button from 1-9 to play the corresponding track (**Rem.20**).
- Press the 'RANDOM' button on the remote control (**Rem.11**) to shuffle all songs on the CD.

### Programming a CD

Use this feature to programme playing audio tracks from a CD in your desired order.

- To programme a CD currently playing, press the 'STOP' button on the unit (**Ref.7**), or on the remote control (**Rem.6**) to stop playing.
- Press the 'FAV/PROG' button on the unit (**Ref.4**) or the 'PROG' button on the remote control (**Rem.21**) to enter in CD programming mode.
- Once entered, on the LCD screen you will see '001' indicating the first song on CD as P01. Using the 'PREVIOUS' & 'NEXT' buttons you can choose a song from the CD audio tracks which you would like to programme and save on position one (P01). Once you find the audio track which you want to save on P01 position, press the 'FAV/PROG' button on the unit (**Ref.4**) or the 'PROG' button on the remote control (**Rem.21**) to save and confirm. You will then be taken to the next position.
- For song position two, the LCD display will show 'P02' to programme the next song. Follow the same steps as previously detailed for P01 to save your next song as P02.
- Once you have completed the programmed list, press the 'PLAY/PAUSE/SCAN' button on the unit (**Ref.8**) or on the remote control (**Rem.17**) to exit the programme playback and start playing your CD in the programmed order.
- While the programme playback is activated, press the 'FAV/PROG' button on the unit (**Ref.4**) to exit.

*Please Note: The Oakcastle HIFI150 has 20 programming slots in total which you can use to programme your CD audio tracks.*

## BLUETOOTH

The Oakcastle HIFI150 can be paired via Bluetooth with a phone or tablet to play audio via the speakers.

Press the 'Mode' button on the unit (**Ref.5**) or on the remote control (**Rem.9**) repeatedly to change the mode into Bluetooth. The Oakcastle HIFI150 screen will display 'BT'.

Ensure the Bluetooth on your device is activated and ready to pair.

Search on your devices list for 'Oakcastle HIFI150 CD Music System' to pair and connect.

Whilst playing audio from your device via the Oakcastle HIFI150 speakers, you can use the following controls & functions on the unit/remote control:

- Press the 'PREVIOUS' and 'NEXT' buttons to skip to the next/previous audio track.
- Press the 'PLAY/PAUSE/SCAN' button to play or pause audio.
- Press the 'VOL+/VOL-/STOP/PAIR' (**Ref.7**) button to stop the audio, and then press again to reconnect via Bluetooth. Press the 'PLAY/PAUSE/SCAN' button (**Rem.17**) to resume playing audio from your device. Press the 'STOP/PAIR' button on the remote control (**Rem.6**) to stop playing from your USB stick. Press the 'PLAY/PAUSE/SCAN' button to resume playing.
- Press the 'STOP/PAIR' button on the remote control (**Rem.6**) to disconnect the Bluetooth. Press the 'STOP/PAIR' button again to re-connect.
- Control the volume level from your device if required.

*Please Note: The Oakcastle HIFI150 cannot be paired with Bluetooth earphones, earbuds or headphones.*

The Oakcastle HIF150 can playback audio from an USB stick of up to 128GB in MP3 or WMA audio format.

Press the 'MODE' button on the unit (**Ref.5**), or on the remote control (**Rem.9**) repeatedly to change the mode into USB. The Oakcastle HIF150 will display 'USB' on the screen.

Insert the USB stick into the USB port on the unit (**Ref.12**). The Oakcastle HIF150 will automatically start playing audio from the USB.

Whilst playing audio from the USB stick you can use the following controls & functions on the unit/remote control:

- Press the 'PREVIOUS' and 'NEXT' buttons to skip to the next/previous audio track.
- Press the 'PLAY/PAUSE/SCAN' button to play or pause audio.
- Press the 'FOLD -' and the 'FOLD +' buttons on the remote control (**Rem.8 and Rem.18**) to select a folder from your USB stick on the USB stick. The folder number will be displayed as 'F01', 'F02' & 'F03'. For example, if you have two folders on the stick the Oakcastle HIF150 will indicate as 'F01' and 'F02'- choose the one you would like to play. Once completed, the next folder will automatically start playing.

*Please note: The Oakcastle HIF150 USB port is just for playback and cannot be used as a connection port with other devices, e.g. charging or for data transfer from a PC.*

## Using AUX (Line Input)

The Oakcastle HIF1150 AUX Input port is to be used to connect with other devices such as a phone, an MP3 player or a tablet and play audio from your device via its speakers.

Before connecting your device with the Oakcastle HIF1150, ensure the volume on the unit and on your device is set to a low level.

Connect the external audio source using an audio cable of 3.5mm (not included) into the AUX IN port on the unit (**Ref.1**).

Press the 'MODE' button on the unit (**Ref.5**), or on the remote control (**Rem.9**) repeatedly to change the mode into AUX In. The Oakcastle HIF1150 will display 'AUX In' on the screen.

Once connected, start playing audio from your device through the Oakcastle HIF1150.

Whilst playing audio from your device in AUX Mode via the Oakcastle HIF1150, you must use your own device controls to Play/Pause/Stop or skip tracks, however the volume level can be adjusted from your device and on the Oakcastle HIF1150.

## Using Headphones

Enjoy private listening by using wired headphones with 3.5mm jack port (not included).

Connect your headphones with the Oakcastle HIF1150 using the headphone jack on the radio (**Ref.2**).

Once connected the audio sound will only be heard via headphones.

Observation	Potential Cause/Solution
<p><b>No power/function</b></p>	<p>Switch off the unit, disconnect all cables and leave the unit for 10 minutes. Insert all cables and plug the unit on. Ensure all cables are properly inserted and power the unit on.</p>
<p><b>No sound</b></p>	<p>Check if the unit is set to MUTE. Check the volume and increase. Check if the cables are properly inserted. If there is no sound while using wired headphones, disconnect and reconnect again. Check volume level on headphones if you have this feature.</p>
<p><b>CD is not playing</b></p>	<p>Check if the CD is properly inserted. Make sure the CD inserted is not damaged or has any scratches on it. Using a dry cloth, clean the CD before inserting it in its compartment.</p>
<p><b>Bluetooth not connecting</b></p>	<p>Ensure the unit is not connected with other devices. Remove the Oakcastle HIF150 from your devices list and pair again.</p>

## Support

If you require further assistance with your new Oakcastle HIF150, please contact our support team on the Oakcastle website: [www.oakcastle.co.uk/support](http://www.oakcastle.co.uk/support).

## Product Specification

<b>Power Supply</b>	Output: DC8.0V 1.5A Input: AC100-240V
<b>Frequency Range</b>	FM 87.5-108MHz BT 2402-2480 MHz
<b>CD supported formats</b>	CD/MP3/WMA/CDDA
<b>USB stick</b>	USB size - up to 128 GB. The USB stick must be formatted in FAT32 or exFat before adding audio files on it)
<b>USB supported audio formats</b>	MP3 or WMA audio file
<b>Bluetooth version</b>	V.5.2

## Warranty

All products come with a standard 12-month warranty. All items must be registered within 30 days of purchase on [www.oakcastle.co.uk](http://www.oakcastle.co.uk) for the warranty to be valid. Once on our website, use the menu to find 'Register Your Product'. You will also be given the chance to extend your warranty for an additional 24 months, free of charge.



1. Read these instructions.
2. Keep these instructions. Instructions are also available for download at [www.majority.co.uk](http://www.majority.co.uk).
3. Heed all warnings.
4. Follow all instructions.
5. Do not clean the apparatus near or with water.
6. Do not block any ventilation openings. Install in accordance with the manufacturer's instructions.
7. Do not block any ventilation openings. Install in accordance with the manufacturer's instructions.
8. Do not install near any heat sources such as radiators, heat registers, stoves, or other apparatus that produce heat.
9. Protect the power from being walked on or pinched particularly at plugs, convenience receptacles, and the point where they exit from the apparatus.
10. Only use accessories specified by the manufacturer.
11. Unplug this apparatus during light storms or when unused for long periods of time.
12. Refer all servicing to qualified service personnel.
13. No naked flame sources, such as a lit candle should be placed on the apparatus.
14. Dispose of used electrical products and batteries safely according to your local authority and regulations.

## ADDITIONAL WARNINGS

The apparatus shall not be exposed to dripping, splashing or objects filled with water.

The main plug is used to disconnect the device. In order to disconnect the apparatus from the main mains completely, the mains plug should be disconnected from the main socket outlet completely.

Battery shall not be exposed to excessive heat.

## RECYCLING ELECTRICAL PRODUCTS

You should now recycle your waste electrical goods and in doing so help the environment.



This symbol means an electrical product should not be disposed of with normal household waste. Please ensure it is taken to a suitable facility for disposal when finished.

**IMPORTANT: Please read all instructions carefully before use and keep for future reference.**



Risk of electric shock. Do not open.



Read all instructions carefully before use and keep for future reference.



When servicing, use only identical replacement parts.



### ATTENTION

RISK OF ELECTRIC SHOCK DO NOT OPEN



### CAUTION

RISQUE D'ELECTROCUTION NE PAS OUVRIR



**IMPORTANT: Please read all instructions carefully before use and keep for future reference**



[WWW.OAKCASTLE.CO.UK](http://WWW.OAKCASTLE.CO.UK)