



OAKCASTLE

F300

USER MANUAL

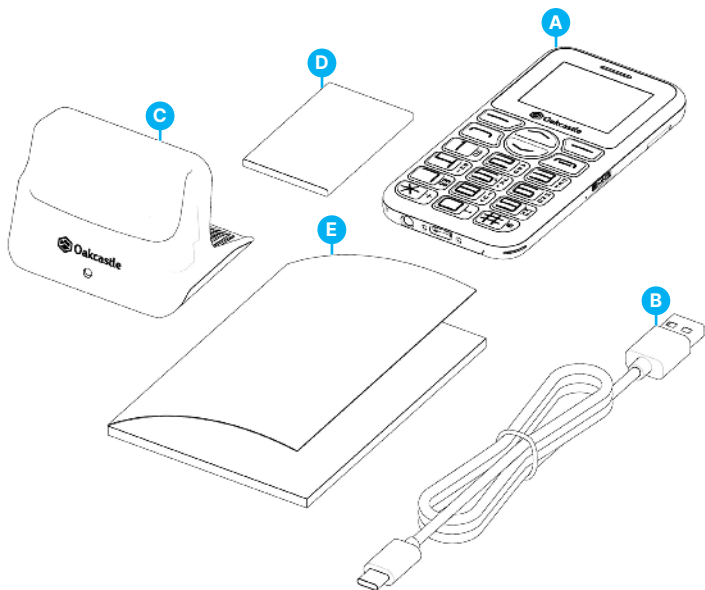
What's In the Box?.....	3
Controls And Functions.....	4
Instructions Guide.....	
Phone Set-Up.....	6
Basic Operation.....	9
Phone Calls & Contacts.....	12
Phone Messaging.....	14
Phone Settings.....	15
Phone Multimedia, Photos & Videos.....	18
FM Radio.....	20
Phone Applications.....	21
Troubleshooting.....	25
Specification.....	25
Warranty.....	25
Safety Information.....	26

3 year
Warranty

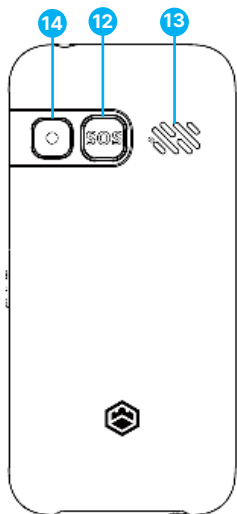
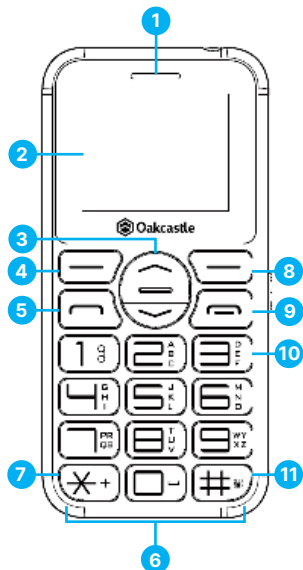
Register your product online for a FREE 3 year
extended warranty at: www.oakcastle.co.uk

What's in the Box?

- A. Oakcastle F300
Mobile Phone
- B. USB-C Cable
- C. Docking Station
- D. Phone Battery
- E. Instructions Guide

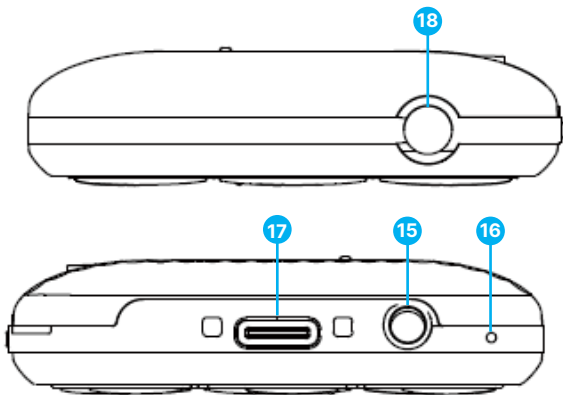


Front and Back View



- | | |
|-----------------------------------|---------------------------------|
| 1. Phone Speaker | 8. Right soft key / Back Button |
| 2. Phone Display | |
| 3. Navigation UP and Down Buttons | 9. ON / OFF / End Call |
| 4. Left soft key / Menu Button | 10. Torch ON / OFF Button |
| 5. Answer / Send Call | 11. # Key |
| 6. Phone Keypad | 12. SOS Emergency Button |
| 7. * Key | 13. Phone Speaker |
| | 14. Phone Photo / Video Camera |

Top and Bottom View



15. Headphone Jack Port

18. Torch LED Light

16. Microphone

17. USB-C Charging Port

How to open the phone case

To open the F300 and remove or replace the battery or even insert a SIM or SD card, place fingernails either side of the small phone case opening to prise open the back case from the phone. There is a small indent in the casing on the bottom right of the p opened, remove the battery to access the SIM and the SD card slots.

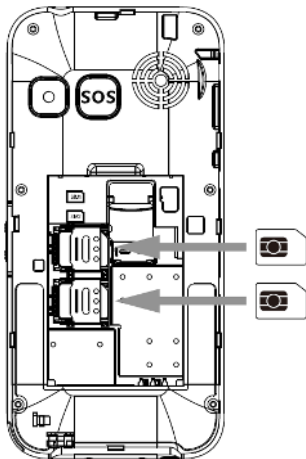
Although the F300 is a dual SIM phone, it is ok to use one SIM card only.

To insert a SIM card, push the metal bar towards the phone edge and lift this up (Picture 1). The SIM card needs to be inserted beneath the thin metal bar.

The metal bar holds the SIM card firmly in place. Insert your SIM card into the metal slot, push down the metal support to affix the SIM card properly into its slot.

Once the SIM card is properly affixed into its slot, insert the battery, and close the phone case afterwards.

Picture 1 - Sim card slot



Once the SIM card is properly affixed into its slot, insert the battery, and close the phone case afterwards.

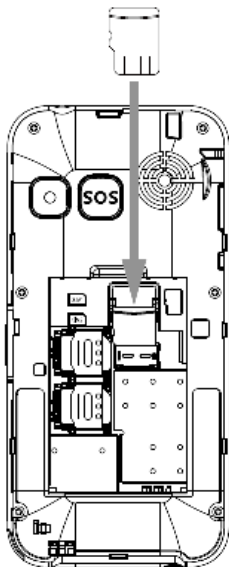
The supported phone SIM cards for the Oakcastle F300 are: 2G, 3G and 4G SIM compatible, including THREE network SIM card which are 3G or 4G.

How to insert an SD card

To insert an SD card use the third slot (Picture 2). Slide the SD card gently into the SD card slot.

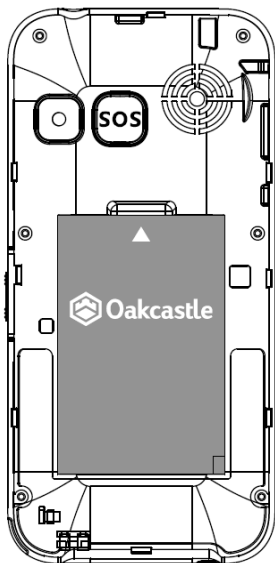
Please note that the metal component of SD card slot is fixed, and therefore should not be moved.

Picture 2 - SD card slot



Insert phone's battery into its slot

Position the battery with the arrow oriented to the small indent of the battery slot, push gently inside its slot. To remove the battery already inserted, place your finger into the small empty place where the arrow sign is and pull up the battery.



*Please note that the instructions in this manual will refer to the phone buttons number e.g. (Ref. *number*) in accordance with the diagrams on page numbers 4 and 5.*

Charging

Using the USB–C cable received in the box, insert the Micro-USB end into the phone and the other end to an USB power supply. Once fully charged, the screen will display 'Charging Complete', indicating that the phone is now ready for use.

The total charging time is 1.5 hours.

Power On / Off

To power ON/OFF the phone, press and hold down the ON/OFF button **(Ref.9)**, for 4 seconds.

Lock/Unlock

The Oakcastle F300 has an automatic 'Lock function', which activate within a few seconds of no use. To unlock/lock the phone, press 'Left soft key' button **(Ref.4)** followed by '*' key button **(Ref.7)**.

Make a call

To make a call, begin dialling a number using the keypad **(Ref.6)** from the home screen, and then press the 'Send Call' button **(Ref.5)** to call the number. Alternatively, select a contact from your Contacts list and then press the 'Send Call / Answer Call' button **(Ref.5)**.

To save a phone number via keypad, type the number using your phone keypad, and then save to your 'Contacts' list. To edit the name, press the 'UP' arrow button to edit then use the phone keypad numbers with corresponding letters on it to type your message.

Note: If you are using two SIM cards you will have the option to choose in between SIM1 and SIM2 card to call from.

Emergency calls

To make an emergency call such as (999) (911) (112) it is not necessary to unlock the phone. Dial the number and press Send Call **(Ref.5)**, alternatively use the 'SOS' red button once configured **(Ref.12)**, see page 14.

Phone SHORTCUTS:

- Phone Menu- Press 'Left soft key' Menu button **(Ref.4)**.
- 'Contacts' – Press the 'Right soft key **(Ref.8)**.
- Torch – slide up or down the torch button on a side of the phone **(Ref.10)**, to switch the torch ON/OFF.
- 'SOS' **(Ref.12)** - Press and hold the 'SOS' button for 3 seconds to initiate an emergency call and send the text message to the phone number of your choice on the same time. To be able to use the 'SOS' button you must first set your 'SOS' emergency preferences and text message via phone menu- 'SOS Settings'.
- Create your own phone key shortcuts key for the arrow buttons via phones- 'Menu - Phone settings.'

Profiles

- Press and hold the '#' key button each time **(Ref.11)** for 2-3 seconds to quickly change phone profiles in 'Normal', 'Silent', or 'Meeting'.

The Oakcastle F300 phone default password is: 1234

Phone Menu

To enter the menu, press the left key button **(Ref.4)**. Using the 'Up' and 'Down' arrow buttons, navigate through the sub-menus such as: Contacts, Message, Call logs, Settings, Multimedia, Audio Application & Internet. Press the 'OK' button to enter each sub-menu and set/use as per your preferences.

'CONTACTS'

This sub-menu has 2 options that you can use: 'ALL' to view contacts phone numbers or 'Group' to view selected phone numbers.

- 'All'- Press the left key **(Ref.4)** to enter. Use the search bar to quickly find one saved contact number or press the left key **(Ref.4)** to enter 'Options'. Within 'Options', you can view Contact List, Add New Contact, Import/Export Contacts, Call/Delete a Contact, Delete multiple contacts and Others. To add a new contact phone number, select 'New', press the left key to enter **(Ref.4)**. You can choose whether to save the contact details to the phone memory, SIM1 or SIM2 card. Once you have chosen where to save the number, you can press the 'UP' arrow button to edit the contact's name, mobile number and contact group. Alternatively, type the phone number on your phone keypad which you can call or add to contacts list.

- **Import/Export contacts** - Use this option to import the contacts in Vcard file format from an SD card or to import saved contacts from phone memory to the contacts list. This can also be used to export the contacts list as a Vcard file. The Vcard saved files are then visible on folders when you enter to find/save the Vcard file.
- **Others** - You can use this option to set and save speed dial phone numbers on your phone keypad buttons from 2 to 9. After saving speed dial numbers, to place a phone call, press and hold the corresponding number on the phone keypad for 2 seconds.
- **'Groups'** – From 'Contacts', highlight 'Groups', and then press the left key (**Ref.4**) to enter and manage your groups. You can use a pre-defined group such as Family, Friends and Business, and personalise by setting a ringtone for each group. Alternatively, you can create your own group. In total there are up to 10 groups that you can set on your phone.

MESSAGING

While in the menu, use the 'Up' or 'Down' arrow buttons to scroll through the sub-menus until you find 'Message'. Press the left soft key **(Ref.4)** to enter.

Within 'Message' you will find: Write a new message, Inbox, Outbox, Drafts, Sent box, Security Inbox, Templates, Broadcast message & Voicemail server.

Send a text message

- Enter 'Write a message', and then select SIM 1 or SIM2 as default to use for sending the text messages from. Press the 'UP' arrow button to edit. Press the corresponding letter buttons on phone keypad buttons to write the text message, select the contact number and send.

When typing a message, use the following mobile phone keys which correspond to:

'1' and '*' - Punctuation and other signs, ?! ' " - @ : ; / _

'0' - Insert space/press number 0

'#' - Input method settings

Abc/abc/ABC/123

Note: For easy access to 'Write a message', you can set this feature on one of the shortcut keys on your phone via Phone-Settings- Shortcut Settings.

'CALL LOGS'

While in the menu, use the 'Up' or 'Down' arrow buttons scroll through the sub-menus until you find 'Call Logs'. Press the left key **(Ref.4)** to enter.

Once entered you will then be able to access and view: Missed Calls, Dialed Calls, Received Calls, Rejected Calls, Delete all, Call timers and Data service counter (SIM card data). To enter and view each of these sections, press the left soft key **(Ref.4)**.

SETTINGS

While in the menu use the 'Up' or 'Down' arrow buttons to scroll through the sub-menus until you find 'Settings'. Press the left soft key **(Ref.4)** to enter. A list of sub-menus will then be displayed as per the followings:

PROFILES – enter this section to choose / adjust one of the phone pre-defined profiles such as: Normal, Silent, Meeting, Indoor, Outdoor, Earphone, Bluetooth or create your own.

PHONE SETTINGS

- **Time & Date**- Set the time and date on your phone. Choose the format you would like to have displayed on your phone screen for the date and the time. Enter 'Update time settings' to set these either manually or choose automatic update.

Note: If you choose automatic update the time will be automatically taken by the SIM card network or GPRS signal sent

- **Language Settings**- Set the text language for your phone display or writing in between: English, French, Spanish, Portuguese, German, Italian. The default phone language is English.
- **Shortcut Settings** – Set your key shortcut, one for the 'Up' and one for the 'Down' arrow buttons (**Ref.3**) to quickly access from the phone's display. Choose one option for each one of these buttons and confirm as done using the right key.
- **Auto power ON/OFF** – You can set the time when the phone will power on or off. Once you have entered this section, select using arrow buttons 'Auto power on' or 'Auto power off'. Enter each section using the left key (**Ref.4**), then press the 'UP' arrow button to edit the time and then set for Once, Daily or Working Days.
- **Shortcut Settings** – Set your key shortcut, one for the 'Up' and one for the 'Down' arrow buttons (**Ref.3**) to quickly access from the phone's display. Choose one option for each one of these buttons and confirm as done using the right key.
- **Auto power ON/OFF** – You can set the time when the phone will power on or off. Once you have entered this section, select using arrow buttons 'Auto power on' or 'Auto power off'. Enter each section using the left key (**Ref.4**), then press the 'UP' arrow button to edit the time and then set for Once, Daily or Working Days.
- **Power Management** - Access this section to check the battery power level.
- **Restore to factory settings** – Enter this section to process a reset to default settings of your phone. Use password 1234.

Note: When completing a factory reset, all your personalised phone settings might be lost as the phone will be stored to factory default. Remove the SIM and SD card before processing a phone reset.

DISPLAY - Change the wallpaper and set the contrast backlight of your display.

CALL SETTINGS - Dual SIM settings, set the 'Call forwarding' or 'Call waiting' details as per your preferences, 'Call barred' or 'Hide ID' when calling or access 'Others' to set 'Call time 'minute reminder,' 'Automatic Dial' or automatic reply with SMS, automatic dial.

SECURITY - Change PIN code settings, Privacy settings, Auto keypad lock and Lock screen by end-key. Set Fixed dialling or Blacklist settings and create or modify a phone lock password.

CONNECTIONS -

When using a SIM card with Internet data you can view specific data information related to your SIM card data such as: Network account, Data roaming services, Data connection settings and Network selection settings.

'SOS' - configure your 'SOS' button for emergencies **(Ref.12)**.

Add up to 5 phone numbers which you can use in case of emergency. Use 'SOS' message to edit your personal pre-defined message that you would like to send in case of emergency. Configure the settings for the 'SOS' button such as sending a text message, LED alert or ringtone alert. Once you have the 'SOS' button configured, in case of emergency press and hold the button for 2-3 seconds to call and send the text message you have saved to use in case of emergency.

MULTIMEDIA

Whilst in the menu, using the arrow buttons navigate through the options until you will see 'Multimedia'. Press the left key **(Ref.4)** to enter.

Within multimedia you will access Camera, Video recordings, Voice recordings and FM radio.

CAMERA/ VIDEO CAMERA/ RECORDER

Camera: To take a picture select 'Camera', and then press the left key to enter **(Ref.4)**. Press the 'UP' arrow button to take a picture and then save. To view the saved picture, access 'Image folder'.

Video Recordings: To start a video recording, press the left soft key **(Ref.4)** to enter 'Video recordings', and then press the 'UP' arrow button to start recording a video, press again to stop recording then save. To view the video recording, enter the 'Video' section.

Recorder: To record a voice message via 'Recorder', press the left soft key (**Ref.4**) to enter and then press the 'UP' arrow button to start recording. Press again to stop recording, and then save. To view the voice recording files while in 'Recorder', press the left soft key to enter 'Options' and then view the 'Record File List'.

Within 'Camera', 'Video Recordings' and 'Recorder' you can access 'Options' which you can change as per your preferences.

Store images, videos and sound recordings using an external SD card. You can upload images to the SD card that you can use as your contact's profile pictures or phone wallpapers (only JPG files can be used for wallpapers). To create a sound recording, an SD card with available storage space must be inserted into the phone. The SD card needs to be up to 64GB.

FM RADIO

While in 'Multimedia', scroll down the list until you find 'FM Radio'. Press the left key **(Ref.4)** to enter. Press the left soft key **(Ref.4)** once again to access the options for FM Radio, which you can set/use as per your preferences.

The FM frequency band for this FM radio is 87.5 - 108MHZ. To get the best radio signal reception, you can use wired earphones with radio antenna incorporated (not included), of 3.5 mm which can be inserted into the headphone jack **(Ref.15)**.

While in FM Radio Settings, it would be recommended to process an 'Auto search and save' for radio stations. Once the phone finishes the scan, the Oakcastle F300 will start playing the first stored radio station with good signal. You can view the list of radio stations stored and found in 'Channels list' or you can process a manual scan of the radio station via 'Manually Scan.' While listening to a radio station, you can set this as 'Background play' and use other phone features while playing your audio. If you're using an SD card, you can also record a radio station while playing, save the audio and then set as a ringtone.

AUDIO

While in the menu, using the arrow buttons scroll through the sub-menus until you will find 'Audio'. Press the left key **(Ref.4)** to enter.

To use this feature, you must have an SD card inserted with preloaded audio files in supported formats MP3/AMR/WAV, which you can play via your phone. With this feature you can listen to music on the go, create playlists, shuffle, and repeat songs, change equaliser settings, and set audio files as ringtones.

APPLICATION

While in the menu, using the arrow buttons, scroll through the sub-menus until you will find 'Application'. Press the left key **(Ref.4)** to enter.

Once entered, you will find the following options in the sub-menu: My files, Bluetooth, Calendar, Calculator, Alarm and World Clock.

- **My files-** this feature is recommended to be used when using an SD card.
- **Bluetooth** – The Oakcastle F300 features 5.0 Bluetooth. To use this feature, enter 'Bluetooth'. Use the arrow buttons press the 'Up' arrow button to tick the boxes and activate 'Bluetooth', 'Bluetooth visibility'. Once you have entered, you can pair your device by pressing the left key **(Ref.4)** button twice to select 'Add new device'.

- Switch on Bluetooth on your device that you are about to pair with and wait for the Oakcastle F300 to find yours, then press the left key button to pair. Use Bluetooth to transfer files to/from your computer or phone (Android only) to/from Oakcastle F300. An SD card is mandatory to be used for this kind of transfer, as phone memory is not enough.

Note: The Oakcastle F300 phone can also be paired with Bluetooth earbuds compatible with version 5.0.

Calculator - Follow the diagram on the screen to use the '+ / - * = ' functions. Use the arrow buttons to select an operation and calculate. In 'Options', M+ /M- adds/subtracts the current value to memory register; MR recalls the current memory register value & MC clears the memory register.

Calendar - Set reminders or add events to the calendar. Press the 'UP' arrow button to edit.

- **Alarm** – Using the arrow buttons, select Alarm 1, Alarm 2, or Alarm 3. Press the 'Up' arrow button to enter and then enter 'Edit'. Within 'Edit' you can: Create a message for alarm, Set the time, set the ringtone the ringtone, set the repeat feature (choose once, daily or working days) and snooze time. Once edited, press the left key (**Ref.4**) to confirm, and then press once again to the left key button to switch the alarm as on or off.
- To cancel/switch off an existing alarm already set, while in the 'Application Menu, select 'Alarms' and highlight the one that you would like to set as off. Press the left key button to switch off or on.
- **World clock** - View, add or delete date and time information across the globe. Once entered in this section, press the 'UP' arrow button to choose one of the cities listed from all over the world. Use the 'UP' or 'DOWN' arrow buttons to scroll through the list and highlight the one you would like to add, and then press the 'UP' arrow button to add. While in 'World Clock', press the left key button to enter 'Options' – here you can add a city, delete a city, set as local time, and set the daylight saving.
- **Internet** - This feature is only to be used in case the SIM card you are using has internet data on it. This section has Bookmarks, History and Offline pages. Enter each of these by pressing the left key (**Ref.4**).

Observation	Potential Cause/Solution
<p>Sim card is not recognized</p>	<p>-Open the phone case, remove the battery and the SD card, leave it for 2 minutes, and then following the steps indicated in this user manual, insert again the SIM card.</p> <p>-Check and see if the SIM card in is one of the supported formats for this phone: 2G, 3G and 4G SIM compatible, including THREE network sim which are 3G or 4G.</p>
<p>The phone displays show 'Emergency calls only'</p>	<p>Check if your phone SIM card is properly inserted into its slot.</p> <p>Check if your SIM card is a valid one, contact your phone SIM card provider.</p>
<p>Cannot pair with other Bluetooth devices</p>	<p>Check your device and see if the Bluetooth is switched on. Check if your device that you are about to pair with is compatible with 5.0 Bluetooth version.</p> <p>Check the Oakcastle F300 list of Bluetooth devices, remove some in case you cannot find the one that you are about to pair with. Try a new search and then follow the steps within the user manual 'Bluetooth section' to pair again.</p>
<p>Any Functionality issues</p>	<p>Remove the SD card and SIM card then process a factory reset of the F300 via Phone Menu- Settings. Use the default password 1234 if required.</p>

Specification

Screen	1.77" 128 x 160 display
Flash Memory	48MB RAM+128MB ROM
Bluetooth Version	Bluetooth 5.0
Bluetooth Compatibility	Android Devices / Bluetooth Headphones
Audio Format	MP3/AMR/WAV
Battery	800mAh
FM Frequency	87.5 - 108 MHz
Micro-SD Card	Compatible with micro SD cards up to 64GB
Photo Format	JPEG
Charging Time	1.5 Hours

Warranty

All products come with a standard 12-month warranty. All items must be registered on www.oakcastle.co.uk for the warranty to be valid. Once on the web page, use the menu to find 'Register Your Product.' You will also be given the chance to extend your warranty for an additional 24 months, free of charge.

Support

If you require further assistance with your new Oakcastle F300 phone, please contact our support team on the Oakcastle website: www.oakcastle.co.uk/support.

1. Read these instructions.
2. Keep these instructions. Instructions are also available for download at www.majority.co.uk.
3. Heed all warnings.
4. Follow all instructions.
5. Do not clean the apparatus near or with water.
6. Do not block any ventilation openings. Install in accordance with the manufacturer's instructions.
7. Do not block any ventilation openings. Install in accordance with the manufacturer's instructions.
8. Do not install near any heat sources such as radiators, heat registers, stoves, or other apparatus that produce heat.
9. Protect the power from being walked on or pinched particularly at plugs, convenience receptacles, and the point where they exit from the apparatus.
10. Only use accessories specified by the manufacturer.
11. Unplug this apparatus during light storms or when unused for long periods of time.
12. Refer all servicing to qualified service personnel.
13. No naked flame sources, such as a lit candle should be placed on the apparatus.
14. Dispose of used electrical products and batteries safely according to your local authority and regulations.

ADDITIONAL WARNINGS

The apparatus shall not be exposed to dripping, splashing or objects filled with water.

The main plug is used to disconnect the device. In order to disconnect the apparatus from the main mains completely, the mains plug should be disconnected from the main socket outlet completely.

Battery shall not be exposed to excessive heat.

RECYCLING ELECTRICAL PRODUCTS

You should now recycle your waste electrical goods and in doing so help the environment.



This symbol means an electrical product should not be disposed of with normal household waste. Please ensure it is taken to a suitable facility for disposal when finished.

IMPORTANT: Please read all instructions carefully before use and keep for future reference.



Risk of electric shock.
Do not open.



Read all instructions carefully before use and keep for future reference.



When servicing, use only identical replacement parts.



ATTENTION

RISK OF ELECTRIC SHOCK DO NOT OPEN



CAUTION

RISQUE D'ELECTROCUTION NE PAS OUVRIIR



IMPORTANT: Please read all instructions carefully before use and keep for future reference



WWW.OAKCASTLE.CO.UK