

DVD100

User Manual



HOME ELECTRONICS • CAMBRIDGE

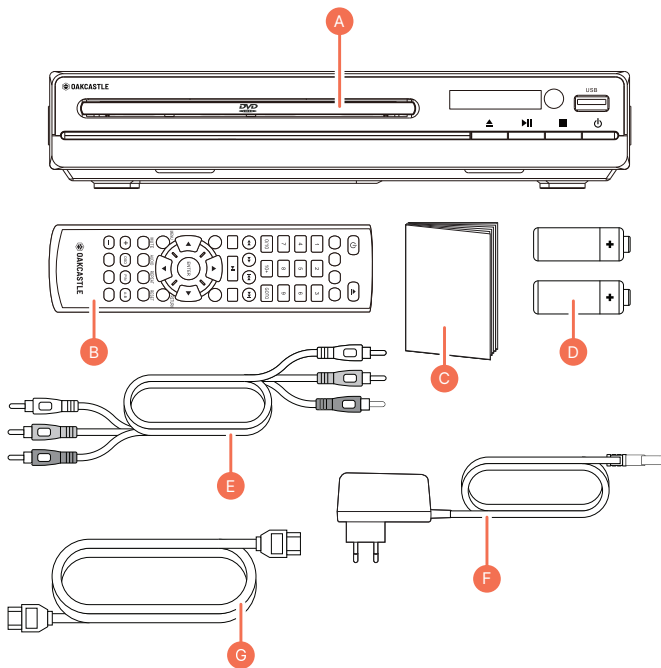
Box Contents	3
Controls & Functions	4
Getting Started	7
DVD Operation	8
USB Operation.....	9
System Set-Up	10
Troubleshooting	15
Specification & Warranty	16
Safety Information	17

3 year
Warranty

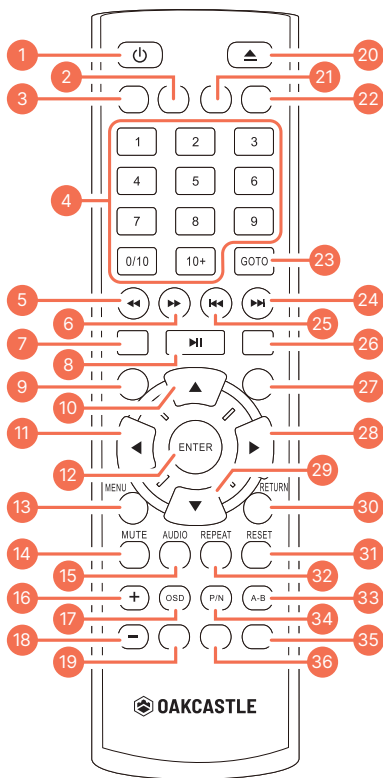
Register your product online for a FREE 3 year
extended warranty at: www.oakcastle.co.uk

What's in the Box

- | | | | |
|----|-----------------------------|----|---------------|
| A. | Oakcastle DVD100 DVD Player | E. | RCA AV Cable |
| B. | Remote Control | F. | Power Adapter |
| C. | User Manual | G. | HDMI Cable |
| D. | 2 x AAA Batteries | | |

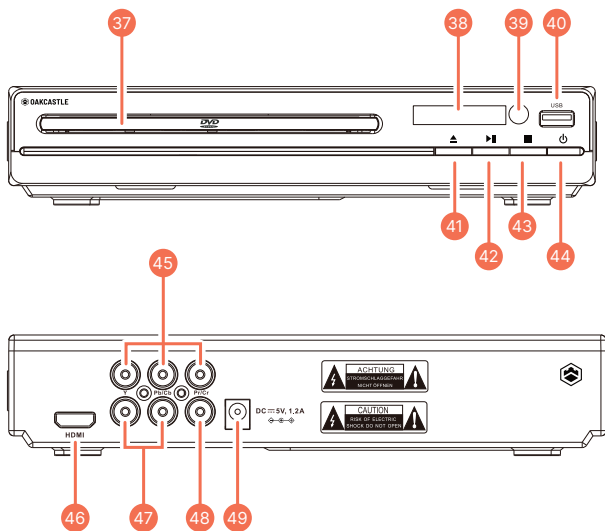


Remote Control



1. On/Off
2. Angle: Change angle in DVD mode (for discs with multi-angle recording)
3. Programme (See page 7)
4. 0-9/10+: While playing DVD/VCD/CD/MP3 discs, use key to select desired track/chapter in menu selection.
5. Rewind (<<)
6. Fast Forward (>>)
7. L/R: Use for VCD or CD discs. Press to select left or right channel, or stereo
8. Play/Pause
9. Setup: Press for setup menu
10. Navigate up
11. Navigate left
12. Enter/Confirm
13. Menu: Return to main DVD title menu
14. Mute/Unmute
15. Audio
16. Volume up (+)
17. OSD
18. Volume down (-)
19. Zoom: During DVD playback, press repeatedly to zoom in or zoom out the frame. When in zoom in mode, use arrow keys to move picture.
20. Open/Close DVD Tray
21. Subtitle (disc dependent)
22. Video: Switch to video output mode (cvbs.yuv.ypbpr)
23. GOTO: Press once to bring up 'GOTO' menu. Use the number keys to input Title or Chapter number and time, and use the arrow keys to move between Title/Chapter/Time input.
24. Next (>>|): In DVD mode, press to go to next chapter. With SVCD, VCD, CD, MP3 discs and USB, press to go to next track.
25. Previous (|<<): In DVD mode, press to go to previous chapter. With SVCD, VCD, CD, MP3 discs and USB, press to go to previous track.
26. Stop
27. Title: Go to Title menu
28. Navigate right
29. Navigate down
30. Return: Return to the root DVD menu.
31. Reset: Reset DVD player settings
32. Repeat: Press repeatedly in DVD mode to scroll through the following options: repeat the Chapter, Title, All tracks/ scenes, or Repeat Off. In SVCD, VCD or CD mode: Repeat Track, Repeat All or Repeat Off.
33. A-B: Press to repeat certain sections. Press button on start point (A) and the end point (B) to select section. Cancel by pressing button a third time.
34. P/N: Open the disc tray, then press to switch the TV system between AUTO, PAL and NTSC.
35. USB: Press to switch between DVD/USB.
36. Slow: Press to select slow speed playing (press repeatedly to select between 1/2, 1/4, 1/8, 1/16 slowed)

Front & Rear View



- | | |
|-------------------|----------------------------|
| 37. DVD Tray | 44. Power On/Off |
| 38. Display | 45. (Y.Pb/Cb.Pr/Cr) Output |
| 39. Remote Sensor | 46. HDMI Output |
| 40. USB Port | 47. 2 x Audio Output ports |
| 41. Open/Close | 48. Video Output |
| 42. Play/Pause | 49. Power Port |
| 43. Stop | |

Setting Up

Connect the DVD player power adapter to a wall outlet. Press the power button (**Ref.44/Ref.1**) on the unit or remote control to turn on your DVD player, the display on the front panel will illuminate.

Follow one of the steps below for connecting your DVD player:

Connecting Via RCA Cable

Connect an RCA cable between the 2 channel Audio Output port and the RCA input on your TV.

Connecting via HDMI

Connect a HDMI cable between the HDMI Output on the back panel of the DVD player (**Ref.46**) to the HDMI input on your TV.

Connecting via Component (Y Pb/Cb Pr/Cr) Cable

Connect a (Y Pb/Cb Pr/Cr) cable via the (Y/Cb/Pb Cr/Pr) Output of the DVD player (**Ref.45**) to your TV (R/L/Video port and cable).

Programme Button

If the disc has two or more tracks, chapters, or titles, if desired, you can set up playing order preference to be in a different order to the default order. Press the PROG button (**Ref.3**) to open up Program mode, then use the number buttons (**Ref.4**) to input the number of the track, title or chapter. To enter a double digit number, first press the 10+ button once to get 10, twice to get 20, and so on, followed by the second digit of your preference. Use the up/down/left/right keys (**Ref.10/Ref.11/Ref.28/Ref.29**) to move the cursor to the next track, chapter or title position you wish to program. After programming, navigate to the 'PLAY' button on the screen, then press ENTER button (**Ref.12**) to start program playing. Navigate to the CLEAR button on the screen, then press ENTER button (**Ref.12**) to clear all settings.

To exit Program mode, press the PROG button (**Ref.3**) again.

Supported Disc Types: CD, CD-R, CD-MP3, CD+RW, DVD, DVD+R, DVD-R, DVD+RW, DVD-RW.

Supported File Types: MP3, DVD, DVD-R-RW.

1. Ensure that your TV is set to the correct mode for DVD playback.
2. Plug in the DVD player and press the 'Power' button to turn the unit on. You can do this on the unit (**Ref.44**) or via the remote (**Ref.1**).

When the machine is switched on, pressing the POWER button on the remote control will make it go into standby mode (**Ref.1**). Press the button again and the machine will switch on.

WARNING: If the product will not be used for an extended period of time, it is advisable to unplug it for safety.

3. Press the Open/Close button on the front panel (**Ref.41**) or on the remote control (**Ref.20**) and place a DVD disc on the disc tray. Press the Open/Close button again to close the tray.
4. The DVD player will read the DVD disc and begin playing. You can control the playback and settings via the remote control.

NOTE: Selecting the Correct Region

If you are experiencing issues playing discs, please follow the instructions below:

- Press 5-1-6-8 on the remote control
- Use direction keys to choose region
- Choose 'all regions'

USB Playback

This device has a USB port in the front interface for MP3/Movie playback.

Insert a USB device into the USB port (**Ref.40**).

Press the USB button on the remote control (**Ref.35**) and select 'USB' to switch the source to USB. The DVD player will display the file list on the USB drive and start playing the first track.

Browse through the file list by pressing the up and down buttons (**Ref.10/Ref.29**) on the remote control. Select a file by pressing the Enter button (**Ref.12**) of the remote control.

USB Drives and MP3 Discs - Playback controls

When playing from an MP3 disc or USB drive, use the following playback controls.

Use the Play/Pause button (**Ref.8**) to play or pause a track.

Use the Stop button (**Ref.26**) to stop a track.

Press the Previous/Next buttons (**Ref.25**)/(**Ref.24**) to skip to the previous or next track.

Use the Rewind/Fast Forward buttons (**Ref.5**)/(**Ref.6**) to rewind or fast forward through a track.

Programme Mode

To begin programming the tracks to play in a specific order, press the PROG button (**Ref.3**). Use the ▲/▼/◀/▶ buttons to shift to the next track position you wish to program. Then use the digit buttons (**Ref.4**) to key in the track you wish to program to that position. Follow these steps for each track slot. When finished, select Start to play the tracks in that order.

To exit Program mode, press the PROG button (**Ref.3**) again.

Note: USB port does not support USB charging for external devices.

Menu Operation

Press the SETUP button (**Ref.9**) on the remote control and the Settings will display.

The menu options are as follows:

Menu 1: System Setup

Menu 2: Language Setup

Menu 3: Video Setup

Menu 4: Audio Setup

Menu 5: Digital Setup

After accessing the Setup menu, use the ▲/▼/◀/▶ buttons (**Ref.10**)/(**Ref.11**)/(**Ref.28**)/(**Ref.29**) to access your chosen sub-menu/function. Press left to go up back up a level, and press right to go down a level into the selected sub-menu/function options. Press the ENTER button (**Ref.12**) to confirm your selection.

To exit SETUP mode, press the SETUP button again (**Ref.9**).

Follow the guidance on the next pages for editing these settings.

Menu 1: System Setup

TV System (NTSC/PAL/AUTO): If TV system is selected, use the ▲/▼/◀/▶ and Enter buttons (**Ref.12**) to set the TV Type to AUTO, NTSC or PAL depending on the color system of your TV.

This player conforms to the NTSC and PAL color systems. However, if you are in the USA, Canada or Mexico, leave this setting on NTSC. If incorrectly set to PAL, the TV picture may roll vertically. In this case, set the TV system to NTSC.

Screensaver: Turn screensaver on or off. If switched on, the screensaver will come on when the unit idles or the image is paused for several minutes.

TV Type: Select the Aspect Ratio to match the connected TV (16:9, 4:3 LB ("Letter Box"), or 4:3 PS ("Progressive Scan")).

Password: To set a new password for playing content rated at or above a rating of your choice (selected using the 'Rating' sub-menu below), first select 'Password' by pressing the Enter button (**Ref.12**). Enter the default password (0000) and press Enter (**Ref.12**). Key in your new 4 digit password using the numeric buttons (**Ref.4**). Press Enter (**Ref.12**) again to confirm your password. View or change the rating of the content you wish to protect with a password by using the 'Rating' sub-menu below.

Rating: Select the desired rating level from the following list: Kid Safe, G (All ages), PG (Parental Guidance), PG 13 (Parental Guidance for children less than 13 years old), PG-R (Parental Guidance suggested for children under 17 years old), R (Parental Guidance strongly suggested for children under 17 years old), NC-17 (Suitable for 17 years or above), Adult (Adults only).

Resume: Select to set auto-resume to 'Off' or 'On'. If switched on, the unit will resume playback from the point where the disc was last stopped.

Default: Select to reset the unit to factory settings.

Menu 2: Language Setup

Osd Language

Select a language for the on-screen display language (languages available are disc dependent).

Audio Language

Select a language for the audio (languages available are disc dependent).

Subtitle Language

Select a language for the subtitles (languages available are disc dependent).

Menu Language

Select a language for the menu (languages available are disc dependent).

Menu 3: Video Setup

HDMI Output

Set the resolution output to match the connected TV.

Video

If your TV is connected to the unit via a video jack, select CVBS.

If your TV is connected to the unit via Y, Pb/Cb, and Pr/Cr jacks, select YUV or YPbPr.

Menu 4: Audio Setup

AUDIO OUT- Using the arrow buttons on the remote control, select the submenu 'Audio Out', choose one of the following options to set the audio, then press the 'ENTER' button to confirm your selection. These options are:

SPDIF/ OFF- Select this option to switch off the digital audio output.

SPDIF/ RAW – Select this option in case the DVD player is connected to an amplifier using the coaxial/HDMI cable.

SPDIF/PCM- Select this option in case the DVD player is connected to a 2nd channel digital stereo amplifier.

Menu 4: Audio Setup

Downmix: Mixing audio Channels

Choose between the following audio mix settings:

LT/RT (Left total/Right total): If this audio mode is selected, the rear left or rear right channels on Dolby 5.1 recording DVD discs will play through both the left and right speakers.

Stereo: If this audio mode is selected, the rear left channel will play through the left speaker, and the rear right channel will play through the right speaker.

Note: the availability of this function depends on the recording of the disc.

Menu 5: Digital Setup

Dual Mono

Choose between the following digital setup settings:

STEREO: The rear left channel plays on the left speaker; the rear right channel plays on the right speaker.

MONO-L: Select to play the left audio channel through all speakers.

MONO-R: Select to play the right audio channel through all speakers.

MIX-MONO: Select to play mixed right and left channels through all speakers

Note: the availability of this function depends on the recording of the disc.

Symptoms	Solutions
No power/function	<p>Check that the power is switched on at the wall.</p> <p>Check that the power adaptor is properly connected to power outlet.</p>
No video	<p>Make sure that the video cables are connected correctly.</p> <p>Check that the input setting on the TV is correct.</p> <p>Press the VIDEO button repeatedly until correct picture appears on TV.</p> <p>Re-install the connection cables.</p> <p>Reset the settings of the DVD player.</p>
No audio	<p>Make sure that the audio cables are connected correctly.</p> <p>Make sure that the coaxial connected stereo is powered on.</p> <p>Re-install the connection cables.</p> <p>Reset the settings of the DVD player.</p>
Distorted video or rolling picture	<p>Clean DVD disc of dust/dirt</p> <p>The playback is on rewind/fast forward mode.</p> <p>Press the P/N button repeatedly to set the color encoding to the correct system to match the connected TV.</p>
Unable to play	<p>Place a DVD disc in the disc tray.</p> <p>Place the disc in with the label side up.</p> <p>Clean DVD disc of dust/dirt.</p> <p>Close the setup of the DVD player.</p> <p>Check that the disc or file is compatible with the unit.</p>
Remote Control does not work	<p>Aim the Remote Control towards the sensor on the front panel of the DVD player.</p> <p>Use the Remote Control closer to the DVD player.</p> <p>Check the battery level of the batteries and replace if necessary.</p>

Support

If you require further assistance with your new DVD player, please contact our support team on the Oakcastle website: www.oakcastle.co.uk

Specifications

Power Supply - AC Power Input	AC 100-240V 50-60 Hz 0.5A Max
Power Supply - DC Power Output	5.0V \approx 1.2A
Compatible Connections	HDMI A/V RCA Output USB Input (Y Pb/Cb Pr/Cr) R/L/Video
Compatible Formats	Video Disc: DVD, DVD+R, DVD-R, DVD+RW, DVD-RW Audio/Photo Disc: CD, CD-MP3, CD+RW, CD-R
Product Dimensions (WxHxD)	20 × 4.2 × 22.5 cm 562g
Regions Supported	Multi-region
FCC no.	LCS201222140AE

Warranty

All products come with a standard 12 month warranty. All items must be registered on www.oakcastle.co.uk for the warranty to be valid. Once on the web page, use the menu to find "register your product". You will also be given the chance to extend your warranty for an additional 24 months, free of charge.

1. Read these instructions.
2. Keep these instructions. Instructions are also available for download at www.oakcastle.co.uk
3. Heed **all** Warnings
4. Follow all instructions
5. Do not clean the apparatus near or with water
6. Do not **block** any ventilation openings. Install in accordance with the manufacturer's instructions
7. Do not install near any heat sources such as radiators, heat registers, stoves, or other apparatus (including amplifiers) that produce heat.
8. Protect the power from being walked on or pinched particularly at **plugs**, convenience receptacles, and the point where they exit from the apparatus.
9. Only use attachment/ accessories specified by the manufacturer.
10. **Unplug** this apparatus during light storms or when unused for long periods of time.
11. Refer **all** servicing to qualified service personnel. Servicing is required when the apparatus has been damaged in a way, such as power-supply cord or **plug** is damaged, liquid has been **spilled** or objects have **fallen** into the apparatus, the apparatus has been exposed to the rain or moisture, does not operate normally or has been dropped.
12. No naked **flame** sources, such as lit candles, should be placed on the apparatus.
13. Dispose of used electrical products and batteries safely according to your **local** authority and regulations.

ADDITIONAL WARNINGS

The apparatus shall not be exposed to dripping and splashing and no object filled with water, such as vases, shall be placed on the apparatus. Main plug is used to disconnect to device and it should remain readily operable during intended use. In order to disconnect the apparatus from the main mains completely, the mains plug should be disconnect from the main socket outlet completely. Battery should not be exposed to extreme heat such as sunshine, fire or the like.

DECLARATION OF CONFORMITY

Hereby, [OAKCASTLE] declares that the DVD equipment type [DVD100] is in compliance with Directive 2014/53/EU.

RECYCLING ELECTRIC PRODUCTS



You should now recycle your waste electrical goods and in doing so to help protecting the environment.

This symbol means an electrical products should not be disposed of with normal household waste. Please ensure it is taken to a suitable facility for disposal when finished with.

IMPORTANT: Please read **all** the instructions carefully before use and keep for future reference.



Risk of electric shock. Do not open



Read **all** the instructions carefully before use and keep for future reference.



When servicing, use only identical replacement parts.



CAUTION

RISK OF ELECTRIC SHOCK
DO NOT OPEN



ATTENTION

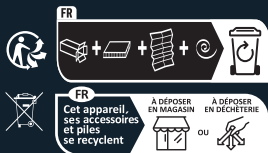
RISQUE D'ELECTROCUTION
NE PAS OUVRIR



IMPORTANT: Please read all instructions carefully before use and keep for future reference



The terms HDMI and HDMI High-Definition Multimedia Interface, and the HDMI Logo are trademarks or registered trademarks of HDMI Licensing Administrator, Inc. in the United States and other countries.



Points de collecte sur www.quefairedemesdechets.fr
Privilégiez la réparation ou le don de votre appareil !

www.oakcastle.co.uk