



OAKCASTLE

# HIFI300

---

USER MANUAL

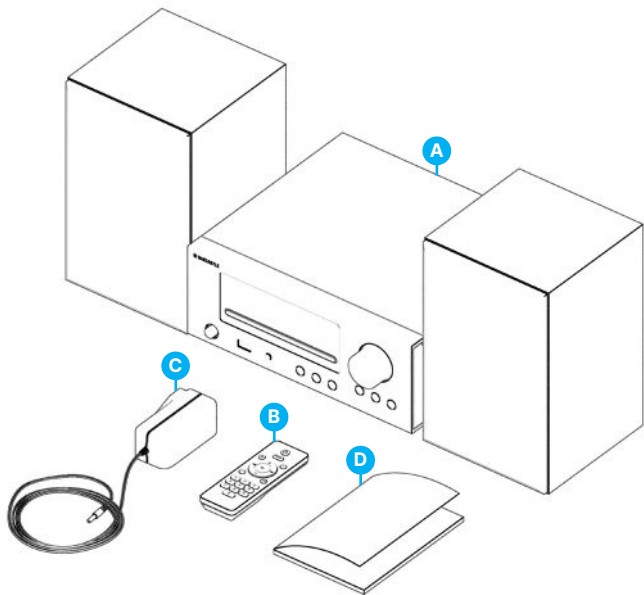
What's In the Box?.....	3
Controls And Functions.....	4
Instructions Guide.....	
Basic Operation.....	6
CD Mode.....	7
USB Playback Port.....	8
Bluetooth Mode.....	9
Line Input Port.....	9
Headphones Port.....	9
FM Radio Mode.....	10
Troubleshooting.....	11
Specification.....	11
Support & Warranty.....	12
Safety Information.....	13

**3 year**  
Warranty

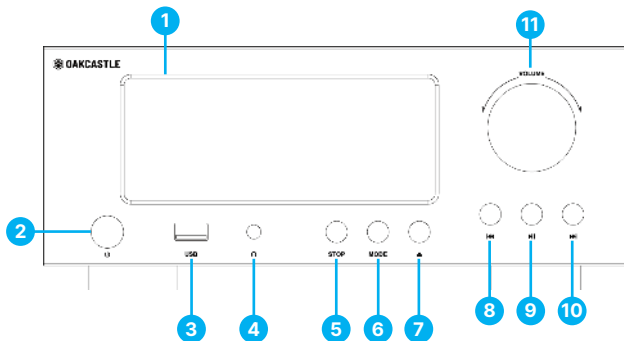
Register your product online for a FREE 3 year  
extended warranty at: [www.oakcastle.co.uk](http://www.oakcastle.co.uk)

## What's in the Box?

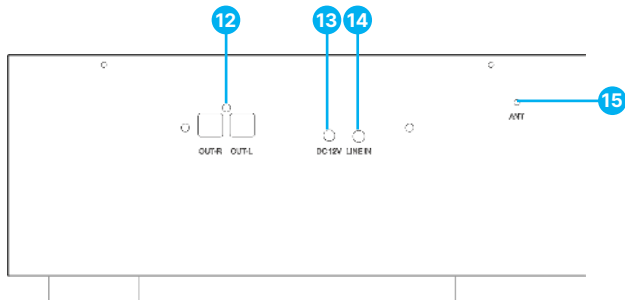
- A. Oakcastle HIFI300
- B. Remote Control
- C. Power Adapter
- D. User Manual



## Front and Back View

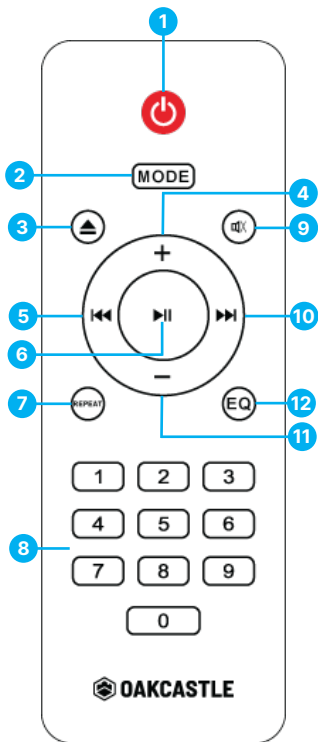


- |                                   |                                     |
|-----------------------------------|-------------------------------------|
| 1. Display                        | 7. Eject Button                     |
| 2. Power Button                   | 8. Previous Track / Station         |
| 3. USB Port (Music Playback only) | 9. Play / Pause / Search FM Station |
| 4. Headphone Jack                 | 10. Next Track / Station            |
| 5. STOP Button                    | 11. Volume Knob                     |
| 6. Mode Button                    |                                     |



- |                      |                  |
|----------------------|------------------|
| 12. R/L Speaker Jack | 14. Line In Jack |
| 13. Power Input Jack | 15. Antenna      |

## Remote Control Buttons



1. Power ON / OFF
2. Mode Button
3. Eject
4. Volume +
5. Previous Track / Radio Station
6. Play / Pause / Search FM Stations
7. Repeat Button
8. Keypad Number Buttons
9. Mute Button
10. Next Track / Radio Station
11. Volume -
12. EQ - There are 6 equalizer sound modes you can choose from, such as: Flat ,Pop, Rock, Jazz, Classical, and Country

*Please note that the instructions within this user manual will refer to the button number on the unit e.g. (Ref 'number'), or buttons on remote control e.g. (Rem. 'number'), in accordance with the diagrams from pages 4 and 5.*

## Product Set-up

1. Connect the Left and the Right speakers to the main unit. Insert the connecting cable port into 'Out-R' port for the right speaker and the left 'Out-L' port for the left speaker **(Ref.12)**.
2. Unwind the power cable and insert the DC jack into the HIFI300 power port **(Ref.13)**, then plug into mains socket.
3. Ensure all cables are properly connected before switching the unit ON. Press the 'ON/OFF' button **(Ref.2)** or use the 'Power' button on the remote control **(Rem.1)** to switch on the Oakcastle HIFI300.

## CD Mode

1. Press the 'Mode' button on the unit (**Ref.6**) or press the 'Mode' button on the remote control (**Rem.2**) repeatedly to change the mode into 'CD'.
2. Press the 'Eject' button on the remote control (**Rem.3**) or on the unit (**Ref.7**) to open the CD tray.
3. Insert a CD in the disc tray with the label facing up, then press again the 'Eject' button, to close the CD compartment.
4. Use the controls on the unit or on the remote control to play/pause/repeat the loaded CD, as per the followings:

Press the 'PLAY/PAUSE' buttons on the remote control (**Rem.6**) to play or pause the CD.

Press the 'NEXT/PREV' buttons on the remote control (**Rem.5 and Rem.10**) to skip to previous or to the next track. Press and hold the 'NEXT' or 'PREV' buttons (**Rem.5 and Rem.1**) for 2-3 seconds to fast forward or fast rewind.

Press the 'STOP' button (**Ref.5**) to the unit to stop playing a CD.

**Repeat Function in CD mode:** Press the 'Repeat' button on the remote control (**Rem.7**) once to repeat an audio track, press twice to repeat the entire CD or press three times to cancel the REPEAT function.

**The remote control buttons keypad 0-9 can be used while in CD mode as per the followings:**

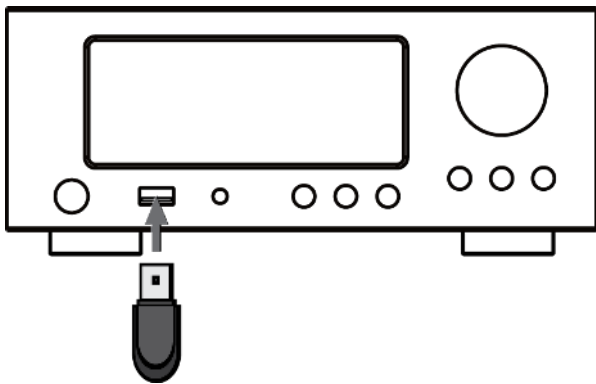
- To appoint tracks in between 0-9, press the corresponding keypad number.
- To appoint track number 10, press the keypad number '0'.
- When using a CD with MP3 audio files on it press the number keys to select the tracks for e.g. the 38th song, press the key number 3 and the key number 8.

If the key is invalid, this means that the tracking number you entered does not exist on your disc.

*The CD supported formats are: CD, CDs with Mp3 or WMA files.*

## Using the USB Playback port

1. Insert an USB stick (not included), to the USB port on the unit (**Ref.3**).
2. Press the 'Mode' button on the unit (**Ref.6**) or press the 'Mode' button on the remote control (**Rem.2**) repeatedly to change the mode into USB.
3. Play audio music files from your USB via HIFI300.
4. Repeat function in USB mode: Press the 'Repeat' button once on the remote control (**Rem.7**) to repeat an audio track, press twice to repeat all or press three times to cancel REPEAT function.



## USB stick requirements:

- The USB stick needs to be formatted in FAT32 before adding audio files.
- The supported audio format is MP3 and WMA.

*Please Note: The Oakcastle HIFI300 USB port is to be used only for playback and not as a connection port with other devices.*



## Bluetooth Mode

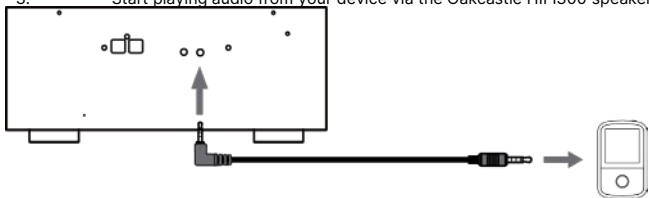
The Oakcastle HIFI300 can be paired with a device such as a phone or a tablet to play audio from via its speakers.

1. Press the 'Mode' button on the unit (**Ref.6**) or press the 'Mode' button on the remote control (**Rem.2**) repeatedly to change the mode into Bluetooth mode.
2. Activate Bluetooth on your device that you are about to pair the Oakcastle HIFI300 with. Search and select on your device's list the 'Oakcastle HIFI300' to connect.
3. Once both devices are successfully paired a prompt sound will be heard. When the paired device is disconnected you will also hear a sound.

*Please note: The Oakcastle HIFI300 is not compatible with Bluetooth earbuds.*

## Using the Line Input port

1. Use an audio cable of 3.5 mm (not included) to connect an audio source such as an MP3 player to play audio from via the Oakcastle HIFI300 speakers. Insert the audio cable into the Line Input port at the back of the HIFI300 (**Ref.14**), and the other end of the cable to your device audio output port.
2. Press the 'Mode' button on the unit (**Ref.6**) or press the 'Mode' button on the remote control (**Rem.2**) repeatedly to change the mode into 'Line In'.
3. Start playing audio from your device via the Oakcastle HIFI300 speakers.



## Using the Headphones port

1. Ensure that the volume level on your HIFI300 is lowered before using the unit with headphones.
2. Insert wired headphones (not included) with a 3.5 mm jack into the HIFI300 headphones port (**Ref.4**). Once connected the speakers will be muted and you can now listen to privately audio through wired headphones.

*Please note: The Oakcastle HIFI300 cannot support wired headphones/earphones with microphone e.g., phone earphones.*

## FM Mode

Ensure the radio antenna (**Ref.15**) is fully extended before using the unit in FM Mode to scan/play radio stations.

1. Press the 'Mode' button on the unit (**Ref.6**) or press the 'Mode' button on the remote control (**Rem.2**) repeatedly to change the mode into 'FM'.
2. While in FM Mode, press the Play/Pause button on the remote control (**Rem.6**) to start automatically scan for FM radio stations available at your location. Once the scan has been completed the radio stations found will be automatically saved.
3. Press the 'NEXT' or 'PREV' buttons on the remote control (**Rem.5, Rem 10**) or the 'NEXT' or 'PREV' buttons on the unit (**Ref.8 and Ref.10**) to select the radio stations.
4. Press and hold the 'NEXT' or 'PREV' buttons on the remote control (**Rem.5, Rem.10**) for 2-3 seconds or the 'NEXT' or 'PREV' buttons on the unit (**Ref.8 and Ref.10**) to tune up or down the frequency band by 0.1MHz.

Observation	Potential Cause/Solution
<b>No Sound</b>	<p>Check if the unit is set to MUTE. Check the volume, increase. Check if the cables are properly inserted. If there is no sound while using wired headphones, disconnect and reconnect again. Check volume level on headphones if you have this feature.</p>
<b>CD is not playing</b>	<p>Check if the CD is properly inserted. Make sure the CD inserted is not damaged or has any scratches on it. Using a dry cloth, clean the CD before inserting it in its compartment. Check if the CD is in supported formats: CD, MP3/WMA. Try a different CD</p>
<b>The remote control does not work</b>	<p>Check the batteries and replace them with new ones. Ensure there is no furniture or other similar obstacles which can restrict the signal between the unit and its remote.</p>
<b>Buttons on the unit do not work.</b>	<p>Unplug the unit, leave it switched off for a few minutes then plug this back on.</p>
<b>Unit has no power/function</b>	<p>Check if the power cable is properly inserted into the wall socket. Try a different socket.</p>

## Specification

<b>Power Supply</b>	DC 12V 2A
<b>Support Disc Format</b>	CD/Mp3/WMA
<b>FM Frequency</b>	87.5-108MHz
<b>Bluetooth Version</b>	V5.0

## Support

If you require further assistance with your new Oakcastle HIFI300, please contact our support team on the Oakcastle website: [www.oakcastle.co.uk/support](http://www.oakcastle.co.uk/support).

## Warranty

All products come with a standard 12-month warranty. All items must be registered within 30 days of purchase on [www.oakcastle.co.uk](http://www.oakcastle.co.uk) for the warranty to be valid. Once on the web page, use the menu to find 'Register Your Product'. You will also be given the chance to extend your warranty for an additional 24 months, free of charge.

1. Read these instructions.
2. Keep these instructions. Instructions are also available for download at [www.majority.co.uk](http://www.majority.co.uk).
3. Heed all warnings.
4. Follow all instructions.
5. Do not clean the apparatus near or with water.
6. Do not block any ventilation openings. Install in accordance with the manufacturer's instructions.
7. Do not block any ventilation openings. Install in accordance with the manufacturer's instructions.
8. Do not install near any heat sources such as radiators, heat registers, stoves, or other apparatus that produce heat.
9. Protect the power from being walked on or pinched particularly at plugs, convenience receptacles, and the point where they exit from the apparatus.
10. Only use accessories specified by the manufacturer.
11. Unplug this apparatus during light storms or when unused for long periods of time.
12. Refer all servicing to qualified service personnel.
13. No naked flame sources, such as a lit candle should be placed on the apparatus.
14. Dispose of used electrical products and batteries safely according to your local authority and regulations.

## ADDITIONAL WARNINGS

The apparatus shall not be exposed to dripping, splashing or objects filled with water.

The main plug is used to disconnect the device. In order to disconnect the apparatus from the main mains completely, the mains plug should be disconnected from the main socket outlet completely.

Battery shall not be exposed to excessive heat.

## RECYCLING ELECTRICAL PRODUCTS

You should now recycle your waste electrical goods and in doing so help the environment.



This symbol means an electrical product should not be disposed of with normal household waste. Please ensure it is taken to a suitable facility for disposal when finished.

**IMPORTANT: Please read all instructions carefully before use and keep for future reference.**



Risk of electric shock.  
Do not open.



Read all instructions carefully before use and keep for future reference.



When servicing, use only identical replacement parts.



### ATTENTION

RISK OF ELECTRIC SHOCK DO NOT OPEN



### CAUTION

RISQUE D'ELECTROCUTION NE PAS OUVRIR



**IMPORTANT: Please read all instructions carefully before use and keep for future reference**

I hereby declare that the product:

**Product Name:** HIFI300 Sound System

**Model:** 1000002879

**Brand Name:** Oakcastle

Satisfies all the technical regulations applicable to the product within the scope of Council Directives 2014/35/EU and 2014/30/EU, 2009/125/EC, 2012/19/EU, 2014/53/EU, 2011/65/EU, 1907/2006.

**2014/35/EU (LVD Directive)**

EN62368-1:2014+A11:2017

**2014/30/EU (EMC Directive)**

EN55032:2015+A11:2020, Class B, EN IEC 61000-3-2: 2019, EN61000-3-3: 2013+A1:2019, EN55035: 2017, EN 301 489-1 V2.2.3 (2019-11), EN 301 489-17 V3.2.2 (2019-12)

**2009/125/EC (ERP Directive)**

EN50564: 2011, EN62311: 2008

**2012/19/EU (WEEE Directive)**

**2014/53/EU (RED Directive)**

EN55032:2015+A11:2020, Class B, EN IEC 61000-3-2: 2019, EN61000-3-3: 2013+A1:2019, EN55035: 2017, EN 301 489-1 V2.2.3 (2019-11), EN 301 489-17 V3.2.2 (2019-12), EN 303 345-1 V1.1.1 (2019-06), EN 303 345-3 V1.1.0 (2019-11), EN 303 345-4 V1.1.0 (2019-11), ETSI EN 300 328 V2.2.2 (2019-07), EN62368-1:2014+A11:2017, EN 62479: 2010, EN 50663:2017

**2011/65/EU & 2015/863/EU (RoHS Directive)**

**1907/2006 (REACH Directive)**

All essential test suites have been carried out.

This declaration is issued under the sole responsibility of iZilla Ltd.

Point of Contact: Eddie Latham | Founder

Signed: 

Date: Nov 2023

**UK:** iZilla Ltd, 49 Viking Way, Cambridge, CB23 8EL, UK

**EU RP:** AR Experts, P.O. Box 5047, 3620 AA Breukelen, The Netherlands

**US:** iZilla Ltd, C/O A.N. Deringer, Inc., 19520 Wilmington Ave, Rancho Dominguez, CA, 90220

Oakcastle is owned and operated by iZilla Ltd. Registered in England with Company No: 08520738





[WWW.OAKCASTLE.CO.UK](http://WWW.OAKCASTLE.CO.UK)