

 OAKCASTLE

# DAB500

---

USER MANUAL

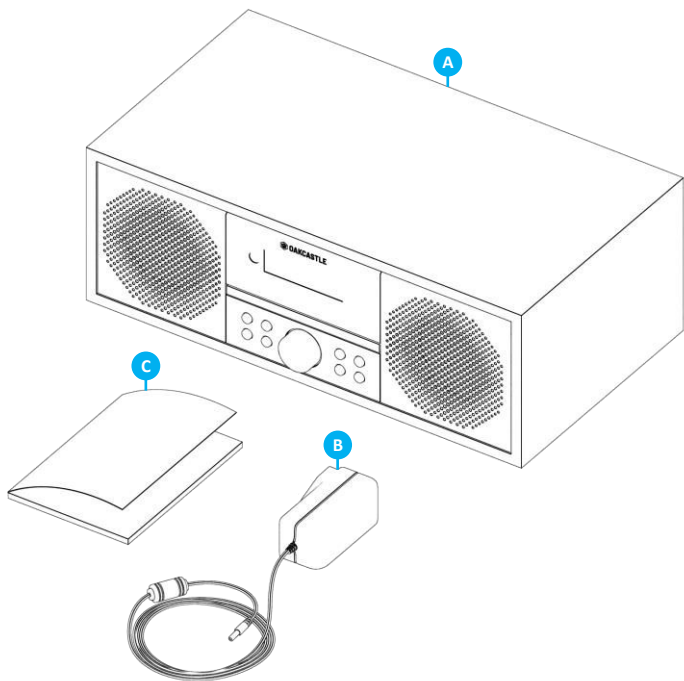
What's In the Box?.....	3
Controls And Functions.....	4
Instructions Guide.....	6
Basic Operations.....	6
DAB/DAB+ Radio.....	7
FM Radio.....	10
CD Mode.....	13
Bluetooth Mode.....	15
AUX In Mode.....	15
USB Playback Mode.....	15
Dual Alarm & Sleep Timer.....	16
System Settings.....	19
Troubleshooting & Support.....	21
Product Specifications .....	22
Warranty.....	22
Safety Information.....	23

**3** year  
Warranty

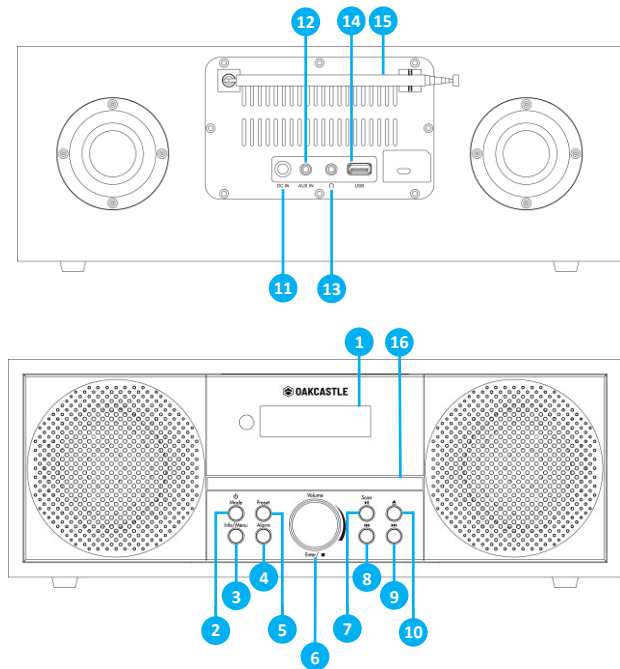
Register your product online for a FREE 3 year  
extended warranty at: [www.oakcastle.co.uk](http://www.oakcastle.co.uk)

## What's in the Box?

- A. Oakcastle DAB500 Music System Player
- B. Power Adapter
- C. User Manual

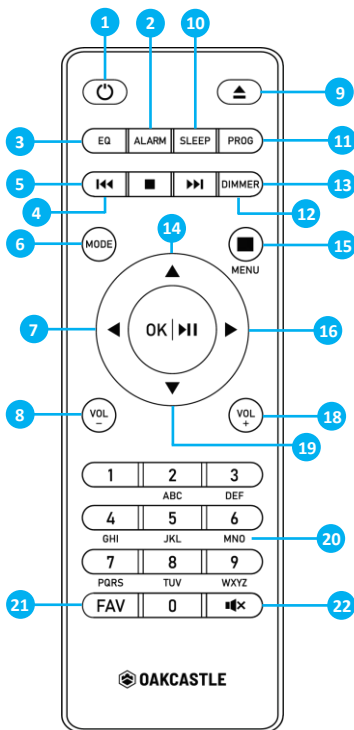


## Front & Rear View Control Buttons



- |    |                 |     |                   |
|----|-----------------|-----|-------------------|
| 1. | Display Screen  | 9.  | Next/Fast Forward |
| 2. | Power Mode      | 10. | Eject             |
| 3. | Info/Menu       | 11. | DC In             |
| 4. | Alarm           | 12. | AUX In            |
| 5. | Preset          | 13. | Headphone Port    |
| 6. | Vol/Enter/Stop  | 14. | USB Playback Port |
| 7. | Scan/Play/Pause | 15. | Telescope Antenna |
| 8. | Previous/Rewind | 16. | CD Tray           |

## Remote Control Buttons



- |                  |                              |
|------------------|------------------------------|
| 1. Power         | 13. Dimmer                   |
| 2. Alarm         | 14. Up                       |
| 3. EQ            | 15. Menu                     |
| 4. Stop          | 16. Next                     |
| 5. Rewind        | 17. Ok/Play/Pause            |
| 6. Mode          | 18. VOL+                     |
| 7. Previous      | 19. Down                     |
| 8. VOL-          | 20. Input Letters and Number |
| 9. Eject         | 21. Fav                      |
| 10. Sleep        | 22. Mute                     |
| 11. Prog         |                              |
| 12. Fast Forward |                              |

## Basic Operations

\*Please note that the instructions within this manual will refer to the remote button number e.g. (Rem\*number\*) or radio buttons e.g. (Ref\* number\*) in accordance with the diagrams on pages 4-5.

Remove the packaging and prepare your Oakcastle DAB500 for use. Unwind the radio power cable included in the box, insert one end into the radio DC IN port (**Ref.11**) and the other end into a wall socket.

Extend the radio antenna in full to make sure you will get the best possible radio signal before scanning for DAB and FM radio stations.

### Power ON/OFF

To power on (Working Mode), press the Power/Mode button (**Ref.2**), or the Power button on remote (**Rem.1**).

To power off (Standby Mode), press the Power/Mode button (**Ref.2**) and hold for 2-3 seconds.

### Changing the radio modes

In working mode, press the Power/Mode (**Ref.2**), repeatedly to change the radio mode in between: DAB, FM, CD, Bluetooth, Aux-in and USB mode.

### Sound modes

Press the EQ button (**Rem.3**) on the remote control to change the sound modes between Normal, Classic, Jazz, Pop, Rock, Speech, and My EQ.

**Note:** *You can create your personalised 'My EQ' as per your preferences as described in page:*

### Dimmer

Press the 'Dimmer' button (**Rem.13**), to change the display brightness. You can choose between high, medium, and low.

## DAB/DAB+ Radio

### DAB Radio

Ensure that the antenna is fully extended before processing a radio station scan to make sure you will have the best possible radio reception.

Press the 'Power/Mode' button on the unit (**Ref.2**) or on the remote (**Rem.6**) repeatedly to change the radio mode to DAB.

Once the radio is set to DAB mode for the first time, the Oakcastle DAB500 will automatically start scanning for available DAB/DAB+ radio stations, showing 'Scanning...' on the display screen. Once the scan has been completed, a full list of radio stations found will be displayed. Press the Vol/Enter/Stop button (**Ref.6**) or use the Previous/Next button on the remote control (**Rem.7/16**), to scroll through the list. Highlight a radio station that you wish to play then press the Vol/Enter/Stop dial (**Ref.6**) or the OK button on the remote control (**Rem.17**) to start playing.

To choose the previous or next station, return to the list, and then use the 'Vol/Enter/Stop' dial (**Ref.6**) or the navigation buttons on remote control to scroll through the list.

To process a new scan, press and hold the 'Info/Menu' button on the unit (**Ref.3**) or the Menu button on remote (**Rem.15**) for 2-3 seconds. Select the 'Full Scan' option. The radio will now begin scanning for DAB stations. Once the scan has been completed a list with all found radio stations will be displayed.

### DAB/DAB+ Preset Stations

Presetting a DAB/DAB+ Radio Station when you have found your desired station, hold down either the 'Preset' button on the unit (**Ref.5**) or the 'FAV' button on the remote (**Rem.21**) for 2-3 seconds to go to the 'Save to Presets' screen. Alternatively, if you want to quickly preset a radio station on the remote keypad buttons (1-9), press and hold for 2-3 seconds the corresponding number on the remote. To save presets from 10-99, Press and hold the FAV button (**Rem.21**) for 2 seconds on the remote control to open 'Save to Presets' on remote control, to open 'Save to Presets'. Scroll through the presets list using the dial button (**Ref.6**) on the radio or the navigation buttons on the remote control to find an empty space where you would like to save your radio station. The empty slots that have no radio station saved on it, will be displayed as '[Not Set]'. Once the preset number has been selected, confirm your choice by pressing the 'Dial' button (**Ref.6**) or the OK button on the remote control (**Rem.17**). Once a station has been saved, the screen will display 'Preset Stored' confirming that the radio station has been successfully stored.

## Recalling a DAB/DAB+ Preset Radio Station

To view your preset favourite stations list, press the 'Preset' button on the unit (**Ref.5**) or the 'FAV' button on the remote control (**Rem.21**) to open 'Recall from Preset' Settings.

**Note: Do not press and hold the button as this will open stored presets rather than the saved presets list.**

Alternatively, to recall preset numbers 1-9, press the corresponding number on the remote (do not hold). To access 1-99 presets list, press the 'FAV' button on the remote control (**Rem.21**), or press 'Preset' button on the radio (**Ref.5**) (do not press and hold) to 'Recall from Preset'. Use the 'Vol/Enter/Stop' (**Ref.6**) or the remote navigation buttons to scroll through the saved preset stations. Once the chosen station you wish to play has been found, confirm your choice by pressing down the 'DIAL' button (**Ref.6**) or the 'OK' button on the remote control (**Rem.17**) and the station will start playing.

## DAB/DAB+ Radio Settings

In DAB mode, press the MENU button on the unit or on the remote control to open DAB settings. Use the 'Vol/Enter/Stop' dial (**Ref.6**) or the Previous/Next buttons on the remote control (**Rem.7/16**) to scroll through the following options:

**Station List:** Enter this section to browse through the available DAB stations.

**Scan:** Select this option to initiate a scan for available stations. While scanning the screen will show 'Scanning' along with the number of stations that have been found.

**Manual Tune:** Select this option to browse through available stations by multiplex and frequency. Once the desired multiplex and frequency has been found, select using with the 'Vol/Enter/Stop' dial (**Ref.6**) or the 'OK' button on the remote control.

**Prune Invalid:** Switch 'Prune invalid' ON, to remove stations that are listed, but not available. Once this option is selected, the screen will show 'This removes all invalid stations, Continue?.' To switch on Prune setting, highlight 'Yes' and confirm with the 'Vol/Enter/Stop' dial (**Ref.6**) or the OK button on the remote.

**DRC (Dynamic Range Compression):** Select this option to reduce the volume of louder sounds and boost the volume of quieter sounds. Select High, Low or Off with the 'Vol/Enter/Stop' dial or the 'OK' button on the remote control.



**Station Order:** Select in which order you would like the DAB/DAB+ stations to be display in such as: alphanumeric, ensemble and valid. Select your chosen option with the 'Vol/Enter/Stop' dial or the OK button on the remote.

**System Settings** - Select this option to open System Settings. Main Menu - Select to open available modes on the system. Scroll through using the 'Vol/Enter/Stop' dial or the buttons on the remote control and select your chosen mode to play from.

## DAB/DAB+ Station Information

While playing a DAB/DAB+ station, the following station information can be viewed by pressing the 'Info/Menu' button repeatedly on the unit or on the remote:

**Program Information:** Displays artist and song currently playing on the station.

**PTY (Program Type):** Shows the type and description of the program provided by the DAB/DAB+ station.

**Channel and Frequency:** Displays the station transmission channel number and frequency.

**Signal Error/Strength:** Provides details of the station signal strength.

**Bit Rate, Codec and Sampling Rate:** The data rate of the signal is being transmitted.

**Today's Date:** Displays the date information provided by the broadcaster.

## FM Radio

Ensure that the antenna is fully extended before processing a radio station scan to make sure you will have the best possible radio reception.

Press the 'Power/Mode' button on the unit (**Ref.2**) or on the remote control (**Rem.6**) repeatedly to change radio mode to FM.

Once in FM Mode, at the first-time use, the FM frequency '87.5 MHz' will be displayed on the radio screen. To initiate an automatic scan up the bandwidth to the next available station, press the 'Vol/Enter/Stop' dial (**Ref.6**) or the 'OK' button (**Rem.17**) on the remote control. Continue to do this and Move the dial until you find all available stations. Use the 'Vol/Enter/Stop' dial to scroll slowly through the frequencies. Rotate the dial (**Ref.6**) button clockwise to manually scroll slowly up the bandwidth and scroll anti-clockwise to manually navigate down the bandwidth. Alternatively, use the 'Previous'/'Next' buttons on the remote control (**Rem.7/16**) to manually scroll up or down the bandwidth slowly.

## FM Preset stations

### Presetting a FM Radio

When you have found your desired station, hold down either the 'Preset' Button on the unit (**Ref.5**) or the FAV button on the remoter (**Rem.21**) for 2-3 seconds to go to 'Save to Presets' screen.

Alternatively, quickly preset a radio station on remote keypad buttons (1-9), press the corresponding number on the remote control for 2-3 seconds. To save presets from 10-99, press and hold the 'FAV' button (**Rem.21**) on remote control for 2 seconds to open 'Save to Presets'. Scroll through the presets list using the dial button (**Ref.6**) on the radio or the navigation buttons on the remote control to find an empty space where you would like to save your radio station. The empty slots that have no radio station saved on it, will be displayed as '[Not Set]'. Once the preset number has been selected, confirm your choice by pressing the dial button (**Ref.6**) or the 'OK' button on the remote control (**Rem.17**). Once a station has been saved, the screen will display 'Preset Stored', confirming that the radio station has been successfully stored.

### Recalling a FM Preset Radio Station

To view your preset favourite stations list, press the 'Preset' button on the unit (**Ref.5**) or the 'FAV' button on the remote control (**Rem.21**) to open 'Recall from Preset' settings.

**Note: Do not press and hold down the button as this will open the preset store rather than the saved presets list.**

Alternatively, to recall preset numbers 1-9, press the corresponding number on the remote (do not hold). To access 1-99 presets list, press FAV button on the remote control (**Rem.21**), or press 'Preset' button on the radio (do not press and hold) to 'Recall from Preset'. Use the 'Vol/Enter/Stop' dial (**Ref.6**) or the remote navigation buttons to scroll through the saved preset stations. Once the chosen station you wish to play has been found, confirm your choice by pressing down the dial button (**Ref.6**) or the 'OK' button on the remote control (**Rem.17**) and the station will start playing.

### FM Radio Settings

In FM Mode, press the 'MENU' button on the unit (**Ref.3**) or on the remote control (**Rem.15**) to open FM settings. Use the 'Vol/Enter/Stop' dial (**Ref.6**) or the Previous/Next buttons on the remote control (**Rem.7/16**) to navigate through the following options:

**Scan Setting:** Select whether you would like to scan for all stations, or just the ones with strong radio signal. Once selected, the screen will display 'Strong stations Only?'. To scan only for stations with strong signal, select 'YES' with the 'Vol/Enter/Stop' dial or the 'OK' button on the remote control.

**Audio Setting:** All stereo stations are reproduced in stereo; for weak stations this can result in poor audio quality. The audio quality in FM Mode can be improved by using mono. Select whether to listen to the audio in stereo or mono. Once selected, the screen will display 'Listen in Mono Only?'. To listen in Mono, select 'YES.' To listen to Stereo, select 'NO'.

**System Settings:** Select this option to open System Settings. Main Menu - Select to open available modes on the system. Scroll through using the 'Vol/Enter/Stop' dial or the buttons on the remote control and select your chosen mode to play from.

**FM Station Information**

While playing a FM radio station, the following information can be viewed by pressing the 'Info/Menu' button repeatedly (**Ref.3**) on the unit:

**Programmed Information:** Displays artist and song currently being played on the station.

**PTY (Programmed Type):** Shows the type and description of the program provided by the FM station.

**Frequency:** Displays the station transmission frequency.

**Today's Date:** Displays the date information provided by the broadcaster, if available.

## CD Mode

### Inserting/Playing a CD:

- Press the 'Power/Mode' button **(Ref.2)** repeatedly to change into CD Mode.
- Press the 'Eject' button **(Ref.10)** to open the CD player's tray and insert the disc.
- Gently push the CD tray to close.
- Press the 'Play' button on the remote control to start playing your CD.

**Please note: The compatible disc formats are CD, CDR, HDCD & MP3.**

### Headphones or External Speakers

Listen to your audio CD through headphones by inserting wired headphones (with a standard 3.5mm connector) into the headphone socket of the player **(Ref.13)**. Ensure that the headphone connector is fully inserted into the device.

### Basic Controls and Functions

- Press 'Scan/Play/Pause' **(Ref.7)** to play or pause a CD.
- Press 'Previous' or 'Next' to skip to the previous or the next track. Press and hold for 2 seconds to rewind or fast forward through a track. **(Rem.5 & 12)**
- Press 'Vol/Enter/Stop' **(Ref.6)** to stop playing a CD.

### Other CD functions

Press and hold the 'Info/Menu' **(Ref.3)** button for 2 seconds, press 'Vol/Enter/Stop' **(Ref.6)** to confirm, then rotate 'Vol/Enter/Stop' **(Ref.6)** to switch on the following playback modes

- Repeat One - repeat one track.
- Repeat Folder - repeat all tracks in a folder.
- Repeat All - repeat all tracks.
- Repeat OFF
- Shuffle - play tracks in random order.

### Programming a CD

Press 'Stop' on the remote control to stop playing the CD, and then press 'PROG' (**Rem.11**) to begin programming your disc to play in a selected order.

Press 'Previous' or 'Next' (**Rem.16**) on the remote control to select your desired track, e.g. T01.

Press 'PROG' on the remote control again, to confirm your choice. Track 1 (T01) has now been programmed to start in position 1 (P01).

Follow the same steps to program your next track until you have reached the maximum of 20 programmed tracks (P20).

Press 'OK' (**Rem.17**) on the remote control to quit playing programmed tracks.

Press 'STOP' (**Rem.4**) on the remote control and press 'OK' (**Rem.17**) on the remote control to quit playing the programmed tracks.

## Bluetooth Mode

The Oakcastle DAB500 can be paired via Bluetooth with a device, such as a phone, a tablet or other similar devices to play audio from via DAB500 speaker.

Press the 'Power/Mode' (**Ref.2**) button repeatedly to switch to Bluetooth mode.

Switch on your device's Bluetooth connectivity and search for the radio. The Oakcastle DAB500 will display as 'Oakcastle DAB500' on your list. Select the radio to connect with your device. Once paired, you will hear a short sound, confirming that both devices are now connected.

Play your chosen audio on your device. Control audio playing from your paired device, rather than the radio's navigation buttons.

*Please note: The Oakcastle DAB500 is not compatible with Bluetooth earbuds.*

## AUX- In Mode

Press the 'Power/Mode' button on the unit (**Ref.2**) or on the remote control (**Rem.6**) repeatedly to find and change into AUX-in mode. You can connect your phone or tablet with an AUX 3.5mm cable (not included) that connects to the audio-in jack on the back of the DAB500 (**Ref.12**) to your device AUX output port/headphone jack. Once connected, you can start playing media from your device Via the Oakcastle DAB500's speaker. Ensure that the volume on your device is switched up for the best sound quality.

## USB Playback Mode

Press the 'Power/Mode' button on the unit (**Ref.2**) or on the remote control (**Rem.6**) repeatedly to change the mode to USB.

Insert an USB stick (not included) with audio files into the USB port of DAB500 (**Ref.14**). Using the 'Vol/Enter/Stop' dial (**Ref.6**), highlight your desired folder/song and press select to play.

### The USB stick specs required for playback on DAB500 are:

There is no limit to maximum size of USB stick that can be used.

The USB format must be set to FAT32 or FAT16.

The USB playback supports WAV/MP3/WMA file types.

The maximum number of files that can be uploaded on the USB stick to play all is 5000.

## Dual Alarm

### Dual Alarm: Setting Alarm 1/Alarm 2

To set an alarm on your radio, press the 'Alarm' button on the remote control (**Rem.2**). Alternatively, press the 'MENU' button (**Rem.15**) to access the alarms settings via the 'Main Menu' - 'Alarms'.

Once entered, in the Alarm section, select 'Alarm 1' or 'Alarm 2' using the 'Vol/Enter/Stop' dial (**Ref.6**) or 'OK' button (**Rem. 17**) on the remote control to set the alarm as per the followings:

**Enable:** Select to choose the alarm sequence in between: Daily, Once, Weekends or Weekdays. If 'ONCE' is selected, the date and time of the alarm will need to be set. Select 'OFF' to turn off the alarm already set.

**Time:** The hour digits of the alarm will now begin to flash. Change the alarm hour with the 'Vol/Enter/Stop' dial (**Ref.6**) or use the 'Previous' or 'Next' buttons (**Rem.7/16**). Once on the chosen alarm hour, press the 'Vol/Enter/Stop' dial (**Ref.6**) or the 'OK' button to confirm. Follow the same process for setting the alarm minutes.

**Mode:** Select between the following alarm wake-up rings: Buzzer, DAB and FM.

**Preset:** If DAB or FM radio station is selected as your alarm ring tone, you can choose in between last played radio station or any of your favourite stations saved on presets for both, DAB & FM.

**Volume:** Use the 'Vol/Enter/Stop' dial (**Ref.6**) or 'Up'/'Down' buttons on the remote control to choose and set the desired alarm sounding volume. Select the volume level by pressing the 'Vol/Enter/Stop' dial button (**Ref.6**) or the 'OK' button.

**Save:** Once the above features have been set for the alarm, select 'Save' with the 'Vol/Enter/Stop' dial (**Ref.6**) or use the OK button to confirm. Once set, an alarm icon will be displayed on the standby screen.

**Setting:** Alarm Features



### How to cancel the alarm

Cancel the alarm before it sounds by pressing the 'Alarm' button on the remote control **(Rem.12)**. Alternatively, press the 'Menu' button on the unit, enter 'Main Menu' and select 'Alarms' to open alarm settings. Select the alarm that you would like to cancel: Alarm 1 or Alarm 2 using the 'Vol/Enter/Stop' dial **(Ref.6)** or use the OK button **(Rem.17)**. Navigate through to the 'Enable', and then select 'OFF'. Once selected, scroll through the settings to 'Save' and confirm alarm cancellation by pressing the 'Vol/Enter/Stop' dial **(Ref.6)** or the 'OK' button **(Rem.17)**.

### How to turn off your alarm when sounding

Turn off the alarm by pressing down the 'Power/Mode' button **(Ref.2)** or the 'Power/Standby' button on the remote control **(Rem.1)** when it is sounding. The screen will then display 'ALARM OFF'.

### Snoozing your alarm

When the alarm is sounding, snooze the alarm by pressing the 'Snooze/Sleep' button on the remote control **(Rem.10)** multiple times to choose and set the snooze timer to 5/10/15/20 minutes. The alarm will now snooze for the selected minutes. Cancel the snooze timer by pressing the Power dial **(Ref.2)** or Power button **(Rem.1)** on the remote control.

*Please note: If the alarm is not stopped, the radio will automatically switch into Standby Mode after an hour. If you set a DAB or FM radio station as the alarm ring tone, and there is no signal, then the alarm will sound a buzzer tone instead.*

## Sleep Timer Settings

A sleep timer can be set to switch your radio to standby after the selected period of time.

**Setting the sleep timer using the 'Sleep' button:** Press the 'Sleep' button on the remote control (**Rem.10**) repeatedly to switch between: 15, 30, 45 or 60 minutes or select 'Sleep Off'. Once the desired sleep timer length you wish to save is displayed on the radio screen, wait 3-5 seconds and the radio will automatically save the timer visible on screen. The sleep timer can also be set via the radio's main menu which you can access by pressing the 'Menu' button on the unit (**Ref.3**) or on the remote control (**Rem.15**).

**Setting the sleep timer using the 'Menu' button:** Press the 'Menu' button on the unit (**Ref.3**) or on the remote control (**Rem.15**), enter 'Main Menu' - 'Settings'. Scroll through the options and find 'Sleep,' but do not select 'SLEEP'. Instead, press the '>' button (**Rem.16**) to open the settings and 'SLEEP OFF' will show. The '>' next button (**Rem.16**) to open Sleep Settings and 'Sleep Off' will show. Use the 'Previous/Next' buttons on the remote control to scroll through Options. Alternatively, press the 'Sleep' button press the 'Sleep' button repeatedly at this point, as per the above guidance. Once the sleep timer has been selected, the timer icon and a sleep image will be visible on the radio screen bottom left side. To turn the sleep timer off, press the 'Sleep' button repeatedly until 'Sleep Timer Off' is visible and select this option.

## System Settings

Access system settings by pressing the 'MENU' button on the unit (**Ref.3**) or on the remote control (**Rem.15**). Scroll through the options to select 'System Settings.'

Use the 'Vol/Enter/Stop' dial (**Ref.3**) or the 'Up/Down' buttons on the remote control (**Rem.7/19**) to navigate through the system settings where you will have the following options:

### Equaliser

Choose between a variety of equaliser settings that improve the sound quality of the audio type/genre. The equaliser can also be accessed by pressing the 'EQ' button on the remote control (**Rem.3**). Select 'My EQ Profile Setup' to set your own equaliser. Select Bass or Treble and alter with the 'Up/Down' buttons or the 'Vol/Enter/Stop' dial (**Ref.6**). Once modified, press the 'Back' button on the radio or the 'Next' (**Rem. 16**), and the screen will display 'Save Changes?.' Select 'YES' to save 'My EQ' and select this as your option under 'Equaliser Settings.'

**Time/Date:** Enter this section to set the time and date as per the following:

**Set Time/Date:** Use this feature to manually set the time and date on your radio. Once entered, the day will start flashing. Change the day with the 'Vol/Enter/Stop' dial (**Ref.6**) or use the 'Up/Down' buttons on the remote. Once on the chosen digit, press down the 'Vol/Enter/Stop' or 'OK' button to confirm. Follow the same process for setting the month and year. Once the date has been set then the hour digits will start flashing. Change the hour with the 'Vol/Enter/Stop' dial or 'Up/Down' buttons.

**Auto Update:** An automatic set of the clock and date for modes can be selected. Choose between: DAB, FM, or No Update.

**Set Format:** Set the clock display format to 12- or 24-hour clock. Confirm your choice by pressing the 'Vol/Enter/Stop' dial (**Ref.6**) or press the 'OK' button to confirm.

**Set Time Zone:** Select your time zone to get the correct clock.

**Daylight Savings:** Select whether you would like daylight savings for automatic adjustment between summertime and wintertime switched on or off.

**Language:** Select your chosen default language for the radio from the list using the 'Vol/Enter/Stop' dial (**Ref.6**) or the 'OK' button on the remote control.

**Factory Reset:** Select this option to perform a factory reset. This would be advisable if your radio has any functionality issues. Select 'Yes' with the 'Vol/Enter/Stop' dial (**Ref.6**) or press the 'OK' button (**Rem.17**) on the remote control.

**Dim Level:** Select this option to choose the dim level screen brightness. The brightness options are Medium, Low or Off.

Observation	Potential Cause/Solution
<p><b>Cannot read disks</b></p>	<p>Make sure the label side of the disk is facing up.                      Ensure the disc is fully secured in place.                      Make sure the disc is not heavily scratched or damaged.                      Wipe the disc gently from the centre out to the edge with a clean, dry, soft cloth.                      Try another new disc to check if the disc is faulty.                      Ensure the format of the disc is CD, CDR, MP3 or HDCD.</p>
<p><b>No sound</b></p>	<p>Check volume is turned up.                      Check earphone jack is inserted fully into the headphone port.</p>
<p><b>No sound on DAB/FM</b></p>	<p>Check the antenna is pull-out fully.                      Move to the place in strong signal.</p>
<p><b>CD does not eject</b></p>	<p>Check the CD is placed correctly.</p>

## Support

Please follow the guidance of the manual to set up your Oakcastle DAB500 and enjoy its fantastic features. If you require further assistance with your new device, please contact our support team on the Oakcastle website: <https://www.oakcastle.co.uk/support>

## Product Specifications

<b>Power Input</b>	DC 12.0V/2.0A
<b>Functions</b>	USB, CD, AUX IN, DAB, FM, Bluetooth
<b>Dimensions</b>	38 x 21 x 13.5cm
<b>Input</b>	100-240V, 50-60Hz, 1A Max
<b>Output</b>	12.0V, 2.0A
<b>Power output of headphones</b>	3.2mw
<b>Impedance of earphones</b>	32ohm
<b>Supported disc formats</b>	CD, CDR, HDCD, MP3
<b>Shockproof time</b>	CD 100 seconds/MP3 180 seconds or more
<b>Bluetooth Version</b>	5.0
<b>Average active efficiency</b>	88.39%
<b>No-load power consumption</b>	0.06W

## Warranty

Register your product within 30 days of purchase on [www.oakcastle.co.uk](http://www.oakcastle.co.uk) to activate your extended warranty. Terms and conditions apply.

1. Read these instructions.
2. Keep these instructions. Instructions are also available for download at [www.majority.co.uk](http://www.majority.co.uk).
3. Heed all warnings.
4. Follow all instructions.
5. Do not clean the apparatus near or with water.
6. Do not block any ventilation openings. Install in accordance with the manufacturer's instructions.
7. Do not block any ventilation openings. Install in accordance with the manufacturer's instructions.
8. Do not install near any heat sources such as radiators, heat registers, stoves, or other apparatus that produce heat.
9. Protect the power from being walked on or pinched particularly at plugs, convenience receptacles, and the point where they exit from the apparatus.
10. Only use accessories specified by the manufacturer.
11. Unplug this apparatus during light storms or when unused for long periods of time.
12. Refer all servicing to qualified service personnel.
13. No naked flame sources, such as a lit candle should be placed on the apparatus.
14. Dispose of used electrical products and batteries safely according to your local authority and regulations.

## ADDITIONAL WARNINGS

The apparatus shall not be exposed to dripping, splashing or objects filled with water.

The main plug is used to disconnect the device. In order to disconnect the apparatus from the main mains completely, the mains plug should be disconnected from the main socket outlet completely.

Battery shall not be exposed to excessive heat.

## RECYCLING ELECTRICAL PRODUCTS

You should now recycle your waste electrical goods and in doing so help the environment.



This symbol means an electrical product should not be disposed of with normal household waste. Please ensure it is taken to a suitable facility for disposal when finished.

**IMPORTANT:** Please read all instructions carefully before use and keep for future reference.

Risk of electric shock.  
Do not open.



Read all instructions carefully before use and keep for future reference.



When servicing, use only identical replacement parts.



### ATTENTION

RISK OF ELECTRIC SHOCK DO NOT OPEN



### CAUTION

RISQUE D'ELECTROCUTION NE PAS OUVRI



**IMPORTANT:** Please read all instructions carefully before use and keep for future reference



[WWW.OAKCASTLE.CO.UK](http://WWW.OAKCASTLE.CO.UK)