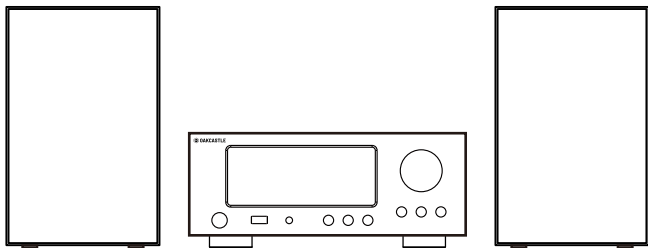


Instruction Guide

HIFI300 | Micro HIFI CD System



Box Contents	1
Controls & Functions	2
Instruction Guide	4
Connecting to the Main Supply.....	4
Connecting to the USB Input.....	4
Connecting to the LINE Input.....	4
Connecting to the Headphone.....	5
Bluetooth Mode.....	5
FM Mode.....	5
CD Mode.....	6
Troubleshooting	7
Specification	7
Warranty	7
Safety Information	8

3 | year
warranty

Register your product for a FREE 3-year
warranty at www.oakcastle.co.uk

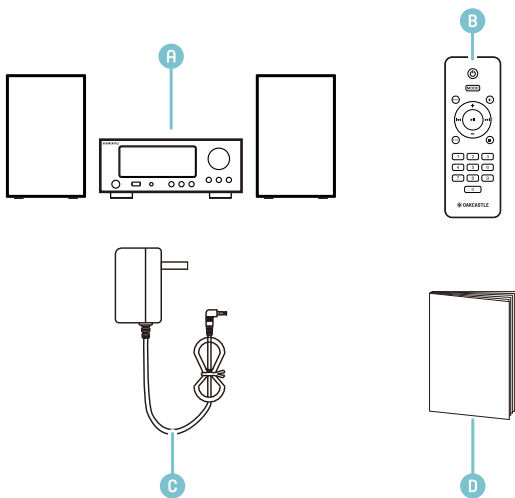
What's in the Box?

A Oakcastle CD System

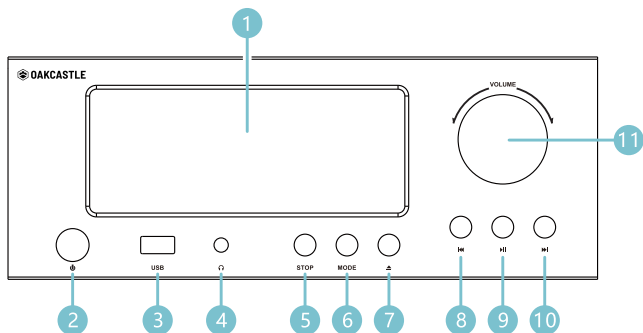
B Remote Control

C Adapter

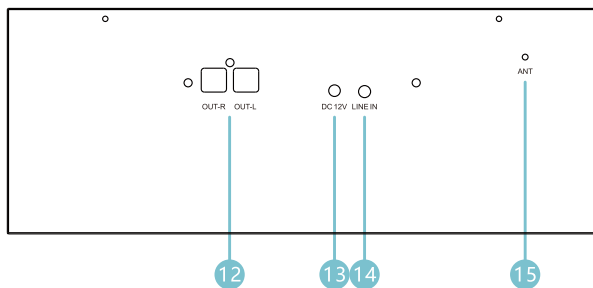
D Instruction Guide



Front View & Back View

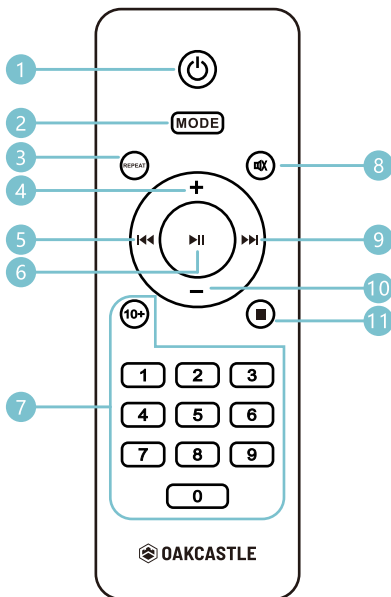


- | | | | |
|----|-------------------------------|-----|----------------------------------|
| 1. | Display | 7. | Eject Button |
| 2. | Power Button | 8. | Previous Track / Station |
| 3. | USB Port(Music Playback Only) | 9. | Play / Pause / Search FM station |
| 4. | Headphone Jack | 10. | Next Track / Station |
| 5. | STOP Button | 11. | Volume Knob |
| 6. | Mode Button | | |



- | | | | |
|-----|------------------|-----|--------------|
| 12. | R/L Speaker Jack | 14. | Line In Jack |
| 13. | Power Input Jack | 15. | Antenna |

Remote Control



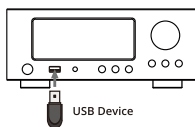
- | | |
|-------------------------------------|-------------------------|
| 1. Power Button | 7. Number Button |
| 2. Mode Button | 8. Mute Button |
| 3. Repeat Button | 9. Next Track / Station |
| 4. Volume Up | 10. Volume Down |
| 5. Previous Track / Station | 11. STOP Button |
| 6. Play / Pause / Search FM Station | |

Connecting to the Main Supply

1. Connect the Left and Right speakers to OUT-L/OUT-R jacks at the back of the unit.
2. Insert the DC plug of the adapter to the DC input Jack on the back of the unit.
Then plug the adapter's plug into a power outlet.
3. Press the " ⏻ " button on the unit to turn on the player.

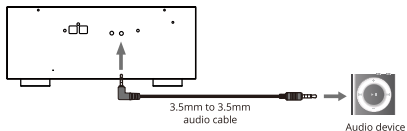
Connecting to the USB Input

1. Connect your USB device to the USB jack on the unit.
2. Press the "Mode" button on the unit or remote to select USB mode.
3. Play music files from the USB device through the unit.



Connecting to the LINE Input

1. Use 3.5mm audio cable(not included) to connect unit with other audio source(such as Mp3 player)
2. Press "MODE" button on the unit or remote to enter LINE IN mode.



Connecting to the Headphone

Connect your headphone to socket at the front of the unit. The unit can not support headphones that have a microphone input, for example: mobile phone headphone.

Bluetooth Mode

The first time you use your Bluetooth device with this player, you will need to connect or "pair" it with the player first.

1. Press the MODE button to select Bluetooth mode.
2. Activate Bluetooth enabled device and select the "Oakcastle HIFI300" in the pairing list.
3. There will be a prompt sound after the successful pairing. If the pairing device is disconnected, the unit will also issue a prompt sound.

FM Mode

When you switch the unit to the radio mode, you can listen to the FM radio program in this mode.

1. This radio antenna is on the back of the machine. When you need to listen to radio, please open the FM antenna.
2. In FM mode, press the "▶||" key on the remote control to automatically search station. It will save the station once searching completed.
3. Press "◀◀" or "▶▶" on the unit or remote to select the stations.
4. Hold and press "◀◀" or "▶▶" on the unit or remote to tune up or down the frequency band by 0.1MHz.

CD Mode

1. Press Mode button to enter CD mode.
2. Press the "▲" button on the unit to open the CD door.
3. Insert a CD in the disc tray with the label facing up and press the button to close the CD door.
4. Use the controls on the unit or the remote to begin playing the loaded disc.

Press "⏮" to skip to previous track. Press and hold the "⏮" to fast rewind.

Press "⏭" to skip to next track. Press and hold the "⏭" to fast forward

STOP Function: When pressing the "STOP" key for the first time, the player will stop playing. Pressing "⏮" button will continue to play from current music. When pressing the "STOP" key twice, the player will enter stop state. Pressing "⏮" will continue to play from first song.

Repeat Function: In CD/USB mode, Press "REPEAT" for the first time will repeat current playing. Press "REPEAT" twice will repeat the whole disc. Press "REPEAT" for three times will cancel repeat function.

Number Key(0-9,10+)

For CD disc,

(1) To appoint 1-9 tracks, press the corresponding number keys(1-9)

(2) To appoint 10 track, press the number key (0)

(3) To appoint 10+ tracks, press the number key(10+).

For example: the 15th song, press number key (10+) and (5).

(4) To appoint 20+ tracks, press the number key(10+) for twice.

For example: the 25th song, press number key(10+) for twice time and press number key (5).

(5) If the track does not exist, the key is invalid.

For MP3 disc, press the number keys to select the tracks.

For example, the 38th song, press the number key(3) and number key(8).

Troubleshooting

Observation	Potential Cause/Solution
No Sound	<ul style="list-style-type: none"> -Check whether the unit is set to MUTE. -Check whether the volume is turned down. -Check whether cables are properly installed. -Headphone may be connected properly. Disconnect the headphone and reconnect again.
Don't play disc	<ul style="list-style-type: none"> -Check whether the disc is put in the proper direction. -The disc is dirty. Please clean the disc.
The remote control does not work	<ul style="list-style-type: none"> -To remove obstacles between remote control and player. -If the battery is exhausted, replace it with a new one.
Button does not work	Turn off the unit and turn on after a few seconds.
No power/function	Check whether the adapter is properly connected to power outlet.

Specifications

Power Supply	DC 12V 2A
Support Disc Format	CD / Mp3 / WMA
FM Frequency	87.5-108MHz
Bluetooth Version	V5.0

Warranty + Support

All products come with a standard 12 month warranty. All items must be registered on www.oakcastle.co.uk for the warranty to be valid. Once on the web page, use the menu to find "register your product". You will also be given the chance to extend your warranty for an additional 24 months, free of charge. If you require further assistance with your new radio, please contact our support team at in@oakcastle.co.uk.

1. Read these instructions.
2. Keep these instructions Instructions are also available for download at www.oakcastle.co.uk
3. Heed all Warnings
4. Follow all instructions
5. Do not clean the apparatus near or with water
6. Do not block any ventilation openings Install in accordance with the manufacturer's instructions
7. Do not install near any heat sources such as radiators, heat registers, stoves, or other apparatus (including amplifiers) that produce heat.
8. Protect the power from being walked on or pinched particularly at plugs, convenience receptacles, and the point where they exit from the apparatus
9. Only use attachments/accessories specified by the manufacturer
10. Unplug this apparatus during light storms or when unused for long periods of time
11. Refer all servicing to qualified service personnel. Servicing is required when the apparatus has been damaged in a way, such as power-supply cord or plug is damaged, liquid has been spilled or objects have fallen into the apparatus, the apparatus has been exposed to the rain or moisture, does not operate normally or has been dropped
12. No naked flame sources, such as lit candles, should be placed on the apparatus
13. Dispose of used electrical products and batteries safely according to your local authority and regulations

ADDITIONAL WARNINGS

The apparatus shall not be exposed to dripping or splashing and no objects filled with liquid, such as vases, shall be placed on the apparatus. Main plug is used to disconnect device and it should remain readily operable during intended use. In order to disconnect the apparatus from the main mains completely, the mains plug should be disconnected from the main socket outlet completely. Battery shall not be exposed to excessive heat such as sunshine, fire or the like.



RECYCLING ELECTRICAL PRODUCTS

You should now recycle your waste electrical goods and in doing so help the environment

This symbol means an electrical product should not be disposed of with normal household waste. Please ensure it is taken to a suitable facility for disposal when finished with.

IMPORTANT: Please read all instructions carefully before use and keep for future reference



Risk of electric shock
Do not open



Read all instructions carefully before use and keep for future reference



When servicing, use only identical replacement parts



CAUTION

RISK OF ELECTRIC SHOCK
DO NOT OPEN



ATTENTION

RISQUE D'ELECTROCUTION
NE PAS OUVRIR



IMPORTANT: Please read all instructions carefully before use and keep for future reference



Oakcastle

G R E A T B R I T A I N

www.oakcastle.co.uk